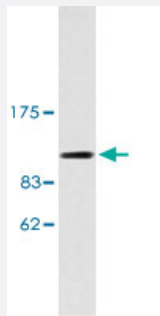


KIF11 polyclonal antibody

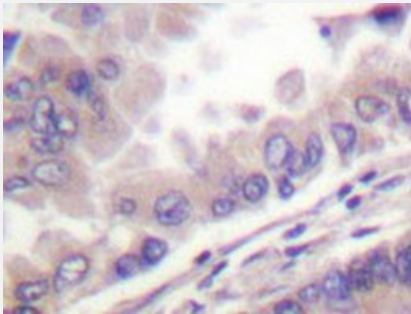
Catalog # PAB24851 Size 100 uL

Applications



Western Blot (Cell lysate)

Western blot analysis of COLO 205 cell lysate with KIF11 polyclonal antibody (Cat # PAB24851).



Immunohistochemistry (Formalin/PFA-fixed paraffin-embedded sections)

Immunohistochemical analysis of paraffin-embedded human lung carcinoma tissue using KIF11 polyclonal antibody (Cat # PAB24851).

Specification

Product Description	Rabbit polyclonal antibody raised against synthetic peptide of KIF11.
Immunogen	A synthetic peptide corresponding to KIF11.
Host	Rabbit
Theoretical MW (kDa)	119
Reactivity	Human
Specificity	KIF11 polyclonal antibody detects endogenous levels of KIF11 protein.
Form	Liquid

Purification	Antigen affinity purification
Concentration	1 mg/mL
Purity	> 95% by SDS-PAGE
Recommend Usage	Western Blot (1:500-1:1000) Immunohistochemistry (1:50-1:200) Immunofluorescence (1:50-1:200) The optimal working dilution should be determined by the end user.
Storage Buffer	In 1x PBS, pH 7.2 (0.05% sodium azide)
Storage Instruction	Store at 4°C. For long term storage store at -20°C. Aliquot to avoid repeated freezing and thawing.
Note	This product contains sodium azide: a POISONOUS AND HAZARDOUS SUBSTANCE which should be handled by trained staff only.

Applications

- Western Blot (Cell lysate)

Western blot analysis of COLO 205 cell lysate with KIF11 polyclonal antibody (Cat # PAB24851).

- Immunohistochemistry (Formalin/PFA-fixed paraffin-embedded sections)

Immunohistochemical analysis of paraffin-embedded human lung carcinoma tissue using KIF11 polyclonal antibody (Cat # PAB24851).

- Immunofluorescence

Gene Info — KIF11

Entrez GeneID	3832
Gene Name	KIF11
Gene Alias	EG5, HKSP, KNSL1, TRIP5
Gene Description	kinesin family member 11
Omim ID	148760
Gene Ontology	Hyperlink

Gene Summary

This gene encodes a motor protein that belongs to the kinesin-like protein family. Members of this protein family are known to be involved in various kinds of spindle dynamics. The function of this gene product includes chromosome positioning, centrosome separation and establishing a bipolar spindle during cell mitosis. [provided by RefSeq]

Other Designations

OTTHUMP00000020099|kinesin-like 1|kinesin-like spindle protein|kinesin-related motor protein|thyroid receptor interacting protein 5

Disease

- [Alzheimer disease](#)
- [Diabetes Mellitus](#)
- [Genetic Predisposition to Disease](#)
- [Glucose Intolerance](#)