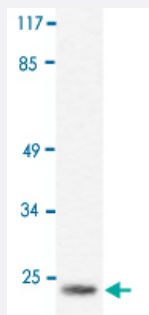


# Histone H1 polyclonal antibody

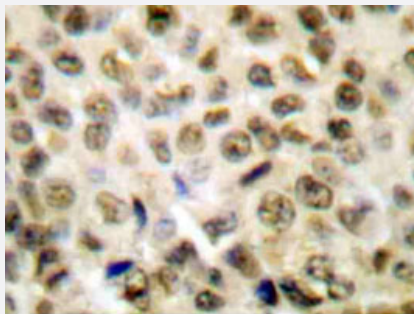
Catalog # PAB24849      Size 100 uL

## Applications



### Western Blot (Cell lysate)

Western blot analysis of HUVEC cell lysate with Histone H1 polyclonal antibody (Cat # PAB24849).



### Immunohistochemistry (Formalin/PFA-fixed paraffin-embedded sections)

Immunohistochemical analysis of paraffin-embedded human lung carcinoma tissue using Histone H1 polyclonal antibody (Cat # PAB24849).

## Specification

Product Description	Rabbit polyclonal antibody raised against synthetic peptide of Histone H1.
Immunogen	A synthetic peptide corresponding to Histone H1.
Host	Rabbit
Theoretical MW (kDa)	21
Reactivity	Human
Specificity	Histone H1 polyclonal antibody detects endogenous levels of protein.
Form	Liquid

<b>Purification</b>	Antigen affinity purification
<b>Concentration</b>	1 mg/mL
<b>Purity</b>	> 95% by SDS-PAGE
<b>Recommend Usage</b>	Western Blot (1:500-1:1000) Immunohistochemistry (1:50-1:200) Immunofluorescence (1:50-1:200) The optimal working dilution should be determined by the end user.
<b>Storage Buffer</b>	In 1x PBS, pH 7.2 (0.05% sodium azide)
<b>Storage Instruction</b>	Store at 4°C. For long term storage store at -20°C. Aliquot to avoid repeated freezing and thawing.
<b>Note</b>	This product contains sodium azide: a POISONOUS AND HAZARDOUS SUBSTANCE which should be handled by trained staff only.

## Applications

- Western Blot (Cell lysate)

Western blot analysis of HUVEC cell lysate with Histone H1 polyclonal antibody (Cat # PAB24849).

- Immunohistochemistry (Formalin/PFA-fixed paraffin-embedded sections)

Immunohistochemical analysis of paraffin-embedded human lung carcinoma tissue using Histone H1 polyclonal antibody (Cat # PAB24849).

- Immunofluorescence