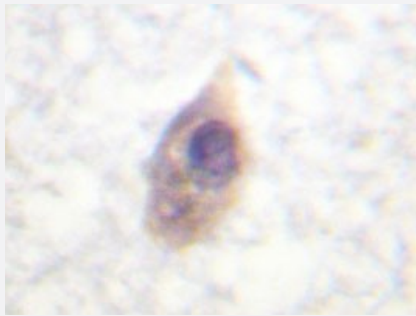


# CDC25B polyclonal antibody

Catalog # PAB24841      Size 100 uL

## Applications



### Immunohistochemistry (Formalin/PFA-fixed paraffin-embedded sections)

Immunohistochemical analysis of paraffin-embedded human breast tissue using CDC25B polyclonal antibody (Cat # PAB24841).

## Specification

<b>Product Description</b>	Rabbit polyclonal antibody raised against synthetic peptide of CDC25B.
<b>Immunogen</b>	A synthetic peptide corresponding to CDC25B.
<b>Host</b>	Rabbit
<b>Theoretical MW (kDa)</b>	64
<b>Reactivity</b>	Human
<b>Specificity</b>	CDC25B polyclonal antibody detects endogenous levels of CDC25B protein.
<b>Form</b>	Liquid
<b>Purification</b>	Antigen affinity purification
<b>Concentration</b>	1 mg/mL
<b>Purity</b>	> 95% by SDS-PAGE

<b>Recommend Usage</b>	Western Blot (1:500-1:1000) Immunohistochemistry (1:50-1:200) Immunofluorescence (1:50-1:200) The optimal working dilution should be determined by the end user.
<b>Storage Buffer</b>	In 1x PBS, pH 7.2 (0.05% sodium azide)
<b>Storage Instruction</b>	Store at 4°C. For long term storage store at -20°C. Aliquot to avoid repeated freezing and thawing.
<b>Note</b>	This product contains sodium azide: a POISONOUS AND HAZARDOUS SUBSTANCE which should be handled by trained staff only.

## Applications

- Immunohistochemistry (Formalin/PFA-fixed paraffin-embedded sections)

Immunohistochemical analysis of paraffin-embedded human breast tissue using CDC25B polyclonal antibody (Cat # PAB24841).

- Immunofluorescence

## Gene Info — CDC25B

<b>Entrez GeneID</b>	<a href="#">994</a>
<b>Gene Name</b>	CDC25B
<b>Gene Alias</b>	-
<b>Gene Description</b>	cell division cycle 25 homolog B (S. pombe)
<b>Omim ID</b>	<a href="#">116949</a>
<b>Gene Ontology</b>	<a href="#">Hyperlink</a>
<b>Gene Summary</b>	CDC25B is a member of the CDC25 family of phosphatases. CDC25B activates the cyclin dependent kinase CDC2 by removing two phosphate groups and it is required for entry into mitosis. CDC25B shuttles between the nucleus and the cytoplasm due to nuclear localization and nuclear export signals. The protein is nuclear in the M and G1 phases of the cell cycle and moves to the cytoplasm during S and G2. CDC25B has oncogenic properties, although its role in tumor formation has not been determined. Multiple transcript variants for this gene exist. [provided by RefSeq]
<b>Other Designations</b>	OTTHUMP00000030137 OTTHUMP00000030138 OTTHUMP00000030139 cell division cycle 25B

## Pathway

- [Cell cycle](#)
- [MAPK signaling pathway](#)

## Disease

- [Bipolar Disorder](#)
- [Genetic Predisposition to Disease](#)
- [Lung Neoplasms](#)
- [Ovarian Neoplasms](#)
- [Pulmonary Disease](#)
- [Urinary Bladder Neoplasms](#)
- [Werner syndrome](#)