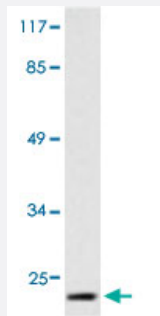


# SNCG polyclonal antibody

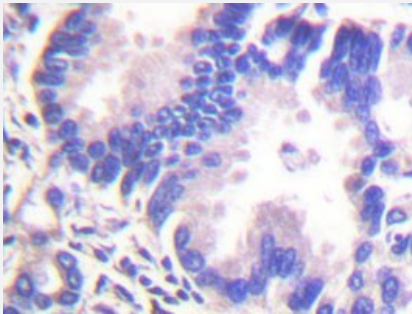
Catalog # PAB24824      Size 100 uL

## Applications



### Western Blot (Cell lysate)

Western blot analysis of HT-29 cell lysate with SNCG polyclonal antibody (Cat # PAB24824).



### Immunohistochemistry (Formalin/PFA-fixed paraffin-embedded sections)

Immunohistochemical analysis of paraffin-embedded human lung carcinoma tissue using SNCG polyclonal antibody (Cat # PAB24824).

## Specification

<b>Product Description</b>	Rabbit polyclonal antibody raised against synthetic peptide of SNCG.
<b>Immunogen</b>	A synthetic peptide corresponding to SNCG.
<b>Host</b>	Rabbit
<b>Theoretical MW (kDa)</b>	20
<b>Reactivity</b>	Human
<b>Specificity</b>	SNCG polyclonal antibody detects endogenous levels of SNCG protein.
<b>Form</b>	Liquid

Purification	Antigen affinity purification
Concentration	1 mg/mL
Purity	> 95% by SDS-PAGE
Recommend Usage	Western Blot (1:500-1000) Immunohistochemistry (1:50-1:200) The optimal working dilution should be determined by the end user.
Storage Buffer	In 1x PBS, pH 7.2 (0.05% sodium azide)
Storage Instruction	Store at 4°C. For long term storage store at -20°C. Aliquot to avoid repeated freezing and thawing.
Note	This product contains sodium azide: a POISONOUS AND HAZARDOUS SUBSTANCE which should be handled by trained staff only.

## Applications

- Western Blot (Cell lysate)

Western blot analysis of HT-29 cell lysate with SNCG polyclonal antibody (Cat # PAB24824).

- Immunohistochemistry (Formalin/PFA-fixed paraffin-embedded sections)

Immunohistochemical analysis of paraffin-embedded human lung carcinoma tissue using SNCG polyclonal antibody (Cat # PAB24824).

## Gene Info — SNCG

Entrez GeneID	<a href="#">6623</a>
Gene Name	SNCG
Gene Alias	BCSG1, SR
Gene Description	synuclein, gamma (breast cancer-specific protein 1)
Omim ID	<a href="#">602998</a>
Gene Ontology	<a href="#">Hyperlink</a>
Gene Summary	Summary: This gene encodes a member of the synuclein family of proteins which are believed to be involved in the pathogenesis of neurodegenerative diseases. Mutations in this gene have also been associated with breast tumor development. [provided by RefSeq]

**Other Designations**

OTTHUMP00000020013|breast cancer-specific protein 1|persyn|synoretin|synuclein, gamma (breast cancer-specific gene 1)

**Disease**

- [Alzheimer disease](#)
- [Parkinson disease](#)