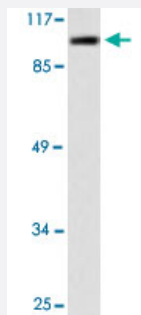


# CSE1L polyclonal antibody

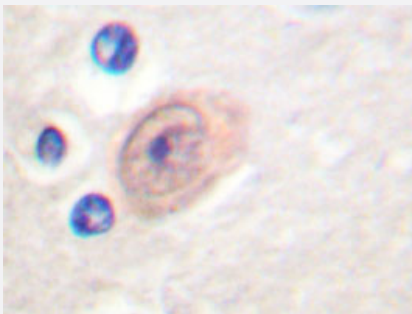
Catalog # PAB24810      Size 100 uL

## Applications



### Western Blot (Cell lysate)

Western blot analysis of 293 cell lysate with CSE1L polyclonal antibody (Cat # PAB24810).



### Immunohistochemistry (Formalin/PFA-fixed paraffin-embedded sections)

Immunohistochemical analysis of paraffin-embedded human brain tissue using CSE1L polyclonal antibody (Cat # PAB24810).

## Specification

<b>Product Description</b>	Rabbit polyclonal antibody raised against synthetic peptide of CSE1L.
<b>Immunogen</b>	A synthetic peptide corresponding to CSE1L.
<b>Host</b>	Rabbit
<b>Theoretical MW (kDa)</b>	110
<b>Reactivity</b>	Human
<b>Specificity</b>	CSE1L polyclonal antibody detects endogenous levels of CSE1L protein.
<b>Form</b>	Liquid

<b>Purification</b>	Antigen affinity purification
<b>Concentration</b>	1 mg/mL
<b>Recommend Usage</b>	Western Blot (1:500-1:1000) Immunohistochemistry (1:50-1:200) Immunoprecipitation (1:50-1:200) Immunofluorescence (1:50-1:200) The optimal working dilution should be determined by the end user.
<b>Storage Buffer</b>	In PBS, pH 7.2 (0.05% sodium azide)
<b>Storage Instruction</b>	Store at 4°C. For long term storage store at -20°C. Aliquot to avoid repeated freezing and thawing.
<b>Note</b>	This product contains sodium azide: a POISONOUS AND HAZARDOUS SUBSTANCE which should be handled by trained staff only.

## Applications

- Western Blot (Cell lysate)

Western blot analysis of 293 cell lysate with CSE1L polyclonal antibody (Cat # PAB24810).

- Immunohistochemistry (Formalin/PFA-fixed paraffin-embedded sections)

Immunohistochemical analysis of paraffin-embedded human brain tissue using CSE1L polyclonal antibody (Cat # PAB24810).

- Immunofluorescence

## Gene Info — CSE1L

<b>Entrez GeneID</b>	<a href="#">1434</a>
<b>Gene Name</b>	CSE1L
<b>Gene Alias</b>	CAS, CSE1, MGC117283, MGC130036, MGC130037, XPO2
<b>Gene Description</b>	CSE1 chromosome segregation 1-like (yeast)
<b>Omim ID</b>	<a href="#">601342</a>
<b>Gene Ontology</b>	<a href="#">Hyperlink</a>

**Gene Summary**

Proteins that carry a nuclear localization signal (NLS) are transported into the nucleus by the importin-alpha/beta heterodimer. Importin-alpha binds the NLS, while importin-beta mediates translocation through the nuclear pore complex. After translocation, RanGTP binds importin-beta and displaces importin-alpha. Importin-alpha must then be returned to the cytoplasm, leaving the NLS protein behind. The protein encoded by this gene binds strongly to NLS-free importin-alpha, and this binding is released in the cytoplasm by the combined action of RANBP1 and RANGAP1. In addition, the encoded protein may play a role both in apoptosis and in cell proliferation. [provided by RefSeq]

**Other Designations**

CSE1 chromosome segregation 1-like protein|OTTHUMP00000043373|cellular apoptosis susceptibility protein|chromosome segregation 1-like|importin-alpha re-exporter