

CARD6 polyclonal antibody

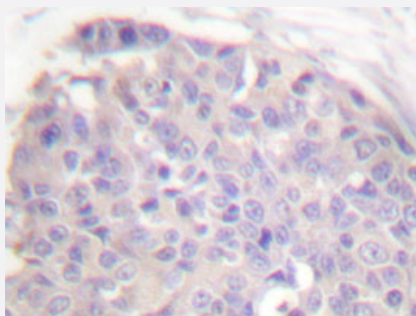
Catalog # PAB24803 Size 100 uL

Applications



Western Blot (Cell lysate)

Western blot analysis of HeLa cell lysate with CARD6 polyclonal antibody (Cat # PAB24803).



Immunohistochemistry (Formalin/PFA-fixed paraffin-embedded sections)

Immunohistochemical analysis of paraffin-embedded human breast cancer tissue using CARD6 polyclonal antibody (Cat # PAB24803).

Specification

Product Description	Rabbit polyclonal antibody raised against synthetic peptide of CARD6.
Immunogen	A synthetic peptide corresponding to CARD6.
Host	Rabbit
Theoretical MW (kDa)	116
Reactivity	Human
Specificity	CARD6 polyclonal antibody detects endogenous levels of CARD6 protein.
Form	Liquid

Purification	Antigen affinity purification
Concentration	1 mg/mL
Recommend Usage	Western Blot (1:500-1:1000) Immunohistochemistry (1:50-1:200) Immunofluorescence (1:50-1:200) The optimal working dilution should be determined by the end user.
Storage Buffer	In PBS, pH 7.2 (0.05% sodium azide)
Storage Instruction	Store at 4°C. For long term storage store at -20°C. Aliquot to avoid repeated freezing and thawing.
Note	This product contains sodium azide: a POISONOUS AND HAZARDOUS SUBSTANCE which should be handled by trained staff only.

Applications

- Western Blot (Cell lysate)

Western blot analysis of HeLa cell lysate with CARD6 polyclonal antibody (Cat # PAB24803).

- Immunohistochemistry (Formalin/PFA-fixed paraffin-embedded sections)

Immunohistochemical analysis of paraffin-embedded human breast cancer tissue using CARD6 polyclonal antibody (Cat # PAB24803).

- Immunofluorescence

Gene Info — CARD6

Entrez GeneID	84674
Gene Name	CARD6
Gene Alias	CINCIN1
Gene Description	caspase recruitment domain family, member 6
Omim ID	609986
Gene Ontology	Hyperlink

Gene Summary

This gene encodes a protein that contains a caspase recruitment domain (CARD), an antiparallel six-helical bundle that mediates homotypic protein-protein interactions. The encoded protein is a microtubule-associated protein that has been shown to interact with receptor-interacting protein kinases and positively modulate signal transduction pathways converging on activation of the inducible transcription factor NF- κ B. [provided by RefSeq]

Other Designations

CARD-containing inhibitor of Nod1 and Cardiac-induced NF- κ B activation|caspase recruitment domain protein 6