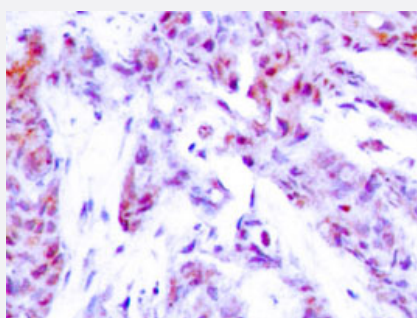


ATF4 polyclonal antibody

Catalog # PAB24799 Size 100 uL

Applications



Immunohistochemistry (Formalin/PFA-fixed paraffin-embedded sections)

Immunohistochemical analysis of paraffin-embedded human breast cancer tissue using ATF4 polyclonal antibody (Cat # PAB24799).

Specification

Product Description	Rabbit polyclonal antibody raised against synthetic peptide of ATF4.
Immunogen	A synthetic peptide corresponding to ATF4.
Host	Rabbit
Reactivity	Human
Specificity	ATF4 polyclonal antibody detects endogenous levels of ATF4 protein.
Form	Liquid
Purification	Antigen affinity purification
Concentration	1 mg/mL
Recommend Usage	Immunohistochemistry (1:50-1:200) The optimal working dilution should be determined by the end user.
Storage Buffer	In PBS, pH 7.2 (0.05% sodium azide)
Storage Instruction	Store at 4°C. For long term storage store at -20°C. Aliquot to avoid repeated freezing and thawing.

Note

This product contains sodium azide: a POISONOUS AND HAZARDOUS SUBSTANCE which should be handled by trained staff only.

Applications

- Immunohistochemistry (Formalin/PFA-fixed paraffin-embedded sections)

Immunohistochemical analysis of paraffin-embedded human breast cancer tissue using ATF4 polyclonal antibody (Cat # PAB24799).

Gene Info — ATF4

Entrez GeneID [468](#)

Gene Name ATF4

Gene Alias CREB-2, CREB2, TAXREB67, TXREB

Gene Description activating transcription factor 4 (tax-responsive enhancer element B67)

Omim ID [604064](#)

Gene Ontology [Hyperlink](#)

Gene Summary

This gene encodes a transcription factor that was originally identified as a widely expressed mammalian DNA binding protein that could bind a tax-responsive enhancer element in the LTR of HTLV-1. The encoded protein was also isolated and characterized as the cAMP-response element binding protein 2 (CREB-2). The protein encoded by this gene belongs to a family of DNA-binding proteins that includes the AP-1 family of transcription factors, cAMP-response element binding proteins (CREBs) and CREB-like proteins. These transcription factors share a leucine zipper region that is involved in protein-protein interactions, located C-terminal to a stretch of basic amino acids that functions as a DNA binding domain. Two alternative transcripts encoding the same protein have been described. Two pseudogenes are located on the X chromosome at q28 in a region containing a large inverted duplication. [provided by RefSeq]

Other Designations activating transcription factor 4|cAMP response element-binding protein 2

Pathway

- [GnRH signaling pathway](#)
- [Long-term potentiation](#)
- [MAPK signaling pathway](#)

- [Neurotrophin signaling pathway](#)
- [Prostate cancer](#)

Disease

- [Bipolar Disorder](#)
- [Genetic Predisposition to Disease](#)
- [Mental Disorders](#)
- [Neuropsychological Tests](#)
- [Schizophrenia](#)