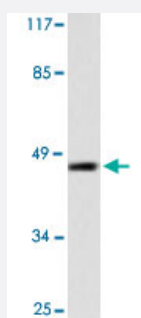


SKP2 polyclonal antibody

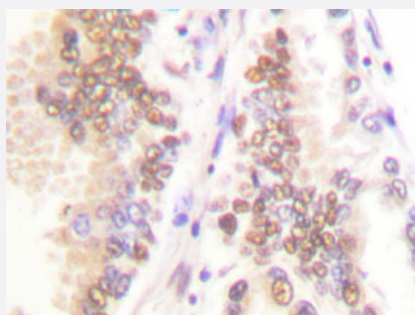
Catalog # PAB24785 Size 100 uL

Applications



Western Blot (Cell lysate)

Western blot analysis of 293 cell lysate with SKP2 polyclonal antibody (Cat # PAB24785).



Immunohistochemistry (Formalin/PFA-fixed paraffin-embedded sections)

Immunohistochemical analysis of paraffin-embedded human lung cancer tissue using SKP2 polyclonal antibody (Cat # PAB24785).

Specification

Product Description	Rabbit polyclonal antibody raised against synthetic peptide of SKP2.
Immunogen	A synthetic peptide corresponding to SKP2.
Host	Rabbit
Theoretical MW (kDa)	47
Reactivity	Human
Specificity	SKP2 polyclonal antibody detects endogenous levels of SKP2 protein.
Form	Liquid

Purification	Antigen affinity purification
Concentration	1 mg/mL
Recommend Usage	Western Blot (1:500-1:1000) Immunohistochemistry (1:50-1:200) Immunofluorescence (1:50-1:200) The optimal working dilution should be determined by the end user.
Storage Buffer	In PBS, pH 7.2 (0.05% sodium azide)
Storage Instruction	Store at 4°C. For long term storage store at -20°C. Aliquot to avoid repeated freezing and thawing.
Note	This product contains sodium azide: a POISONOUS AND HAZARDOUS SUBSTANCE which should be handled by trained staff only.

Applications

- Western Blot (Cell lysate)

Western blot analysis of 293 cell lysate with SKP2 polyclonal antibody (Cat # PAB24785).

- Immunohistochemistry (Formalin/PFA-fixed paraffin-embedded sections)

Immunohistochemical analysis of paraffin-embedded human lung cancer tissue using SKP2 polyclonal antibody (Cat # PAB24785).

- Immunofluorescence

Gene Info — SKP2

Entrez GeneID	6502
Gene Name	SKP2
Gene Alias	FBL1, FBXL1, FLB1, MGC1366
Gene Description	S-phase kinase-associated protein 2 (p45)
Omim ID	601436
Gene Ontology	Hyperlink

Gene Summary

This gene encodes a member of the F-box protein family which is characterized by an approximately 40 amino acid motif, the F-box. The F-box proteins constitute one of the four subunits of ubiquitin protein ligase complex called SCFs (SKP1-cullin-F-box), which function in phosphorylation-dependent ubiquitination. The F-box proteins are divided into 3 classes: Fbws containing WD-40 domains, Fbls containing leucine-rich repeats, and Fbxs containing either different protein-protein interaction modules or no recognizable motifs. The protein encoded by this gene belongs to the Fbls class; in addition to an F-box, this protein contains 10 tandem leucine-rich repeats. This protein is an essential element of the cyclin A-CDK2 S-phase kinase. It specifically recognizes phosphorylated cyclin-dependent kinase inhibitor 1B (CDKN1B, also referred to as p27 or KIP1) predominantly in S phase and interacts with S-phase kinase-associated protein 1 (SKP1 or p19). In addition, this gene is established as a protooncogene causally involved in the pathogenesis of lymphomas. Alternative splicing of this gene generates 2 transcript variants encoding different isoforms. [provided by RefSeq]

Other Designations

CDK2/cyclin A-associated protein p45|S-phase kinase-associated protein 2

Pathway

- [Cell cycle](#)
- [Pathways in cancer](#)
- [Small cell lung cancer](#)
- [Ubiquitin mediated proteolysis](#)

Disease

- [Breast cancer](#)
- [Breast Neoplasms](#)
- [Cardiovascular Diseases](#)
- [Diabetes Mellitus](#)
- [Disease Progression](#)
- [Edema](#)
- [Genetic Predisposition to Disease](#)
- [Ovarian Neoplasms](#)