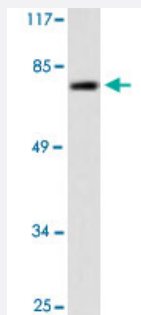


IVL polyclonal antibody

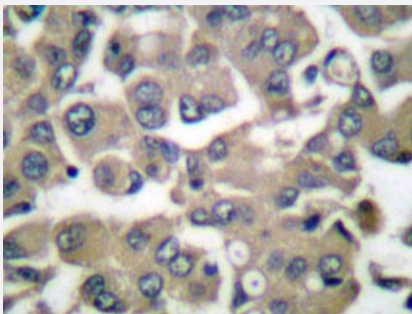
Catalog # PAB24762 Size 100 uL

Applications



Western Blot (Cell lysate)

Western blot analysis of HUVEC cell lysate with IVL polyclonal antibody (Cat # PAB24762).



Immunohistochemistry (Formalin/PFA-fixed paraffin-embedded sections)

Immunohistochemical analysis of paraffin-embedded human breast cancer tissue using IVL polyclonal antibody (Cat # PAB24762).

Specification

Product Description	Rabbit polyclonal antibody raised against synthetic peptide of IVL.
Immunogen	A synthetic peptide corresponding to IVL.
Host	Rabbit
Theoretical MW (kDa)	68
Reactivity	Human
Specificity	IVL polyclonal antibody detects endogenous levels of IVL protein.
Form	Liquid

Purification	Antigen affinity purification
Concentration	1 mg/mL
Recommend Usage	Western Blot (1:500-1:1000) Immunohistochemistry (1:50-1:200) The optimal working dilution should be determined by the end user.
Storage Buffer	In PBS, pH 7.2 (0.05% sodium azide)
Storage Instruction	Store at 4°C. For long term storage store at -20°C. Aliquot to avoid repeated freezing and thawing.
Note	This product contains sodium azide: a POISONOUS AND HAZARDOUS SUBSTANCE which should be handled by trained staff only.

Applications

- Western Blot (Cell lysate)

Western blot analysis of HUVEC cell lysate with IVL polyclonal antibody (Cat # PAB24762).

- Immunohistochemistry (Formalin/PFA-fixed paraffin-embedded sections)

Immunohistochemical analysis of paraffin-embedded human breast cancer tissue using IVL polyclonal antibody (Cat # PAB24762).

Gene Info — IVL

Entrez GeneID	3713
Gene Name	IVL
Gene Alias	-
Gene Description	involucrin
Omim ID	147360
Gene Ontology	Hyperlink
Gene Summary	Involucrin, a component of the keratinocyte crosslinked envelope, is found in the cytoplasm and crosslinked to membrane proteins by transglutaminase. This gene is mapped to 1q21, among calpactin I light chain, trichohyalin, profilaggrin, loricrin, and calcyclin. [provided by RefSeq]
Other Designations	OTTHUMP00000014402

Disease

- [Dermatitis](#)
- [Genetic Predisposition to Disease](#)