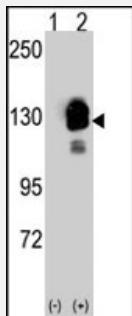


CDH8 polyclonal antibody

Catalog # PAB2476

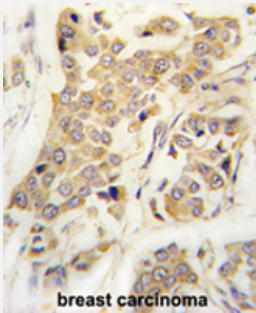
Size 400 uL

Applications



Western Blot (Transfected lysate)

Western blot analysis of CDH8 (arrow) using rabbit CDH8 polyclonal antibody (Cat # PAB2476). 293 cell lysates (2 ug/lane) either nontransfected (Lane 1) or transiently transfected with the CDH8 gene (Lane 2) (Origene Technologies).



Immunohistochemistry (Formalin/PFA-fixed paraffin-embedded sections)

Formalin-fixed and paraffin-embedded human breast carcinoma reacted with CDH8 polyclonal antibody (Cat # PAB2476), which was peroxidase-conjugated to the secondary antibody, followed by AEC staining.

This data demonstrates the use of this antibody for immunohistochemistry; clinical relevance has not been evaluated.

Specification

Product Description	Rabbit polyclonal antibody raised against synthetic peptide of CDH8.
Immunogen	A synthetic peptide (conjugated with KLH) corresponding to N-terminus of human CDH8.
Host	Rabbit
Reactivity	Human
Form	Liquid
Purification	Protein A purification

Recommend Usage	Western Blot (1:1000) Immunohistochemistry (1:10-50) The optimal working dilution should be determined by the end user.
Storage Buffer	In PBS (0.09% sodium azide)
Storage Instruction	Store at 4°C. For long term storage store at -20°C. Aliquot to avoid repeated freezing and thawing.
Note	This product contains sodium azide: a POISONOUS AND HAZARDOUS SUBSTANCE which should be handled by trained staff only.

Applications

- Western Blot (Transfected lysate)

Western blot analysis of CDH8 (arrow) using rabbit CDH8 polyclonal antibody (Cat # PAB2476). 293 cell lysates (2 ug/lane) either nontransfected (Lane 1) or transiently transfected with the CDH8 gene (Lane 2) (Origene Technologies).

- Western Blot

- Immunohistochemistry (Formalin/PFA-fixed paraffin-embedded sections)

Formalin-fixed and paraffin-embedded human breast carcinoma reacted with CDH8 polyclonal antibody (Cat # PAB2476), which was peroxidase-conjugated to the secondary antibody, followed by AEC staining.

This data demonstrates the use of this antibody for immunohistochemistry; clinical relevance has not been evaluated.

Gene Info — CDH8

Entrez GeneID	1006
Protein Accession#	NP_001787:P55286
Gene Name	CDH8
Gene Alias	Nbla04261
Gene Description	cadherin 8, type 2
Omim ID	603008
Gene Ontology	Hyperlink

Gene Summary

This gene encodes a type II classical cadherin from the cadherin superfamily, integral membrane proteins that mediate calcium-dependent cell-cell adhesion. Mature cadherin proteins are composed of a large N-terminal extracellular domain, a single membrane-spanning domain, and a small, highly conserved C-terminal cytoplasmic domain. The extracellular domain consists of 5 subdomains, each containing a cadherin motif, and appears to determine the specificity of the protein's homophilic cell adhesion activity. Type II (atypical) cadherins are defined based on their lack of a HA V cell adhesion recognition sequence specific to type I cadherins. This particular cadherin is expressed in brain and is putatively involved in synaptic adhesion, axon outgrowth and guidance. [provided by RefSeq]

Other Designations

cadherin-8|putative protein product of Nb1a04261

Publication Reference

- [Expression of cadherin-8 in renal cell carcinoma and fetal kidney.](#)

Blaschke S, Mueller CA, Markovic-Lipkowski J, Puch S, Miosge N, Becker V, Mueller GA, Klein G.

International Journal of Cancer 2002 Oct; 101(4):327.

Application: IHC-P, IF, Human, MB, GL cells, Renal

- [Identification of three human type-II classic cadherins and frequent heterophilic interactions between different subclasses of type-II classic cadherins.](#)

Shimoyama Y, Tsujimoto G, Kitajima M, Natori M.

The Biochemical Journal 2000 Jul; 349(Pt 1):159.

Disease

- [Tobacco Use Disorder](#)