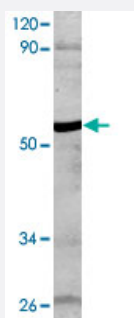


GFAP (phospho S38) polyclonal antibody

Catalog # PAB24756

Size 100 uL

Applications



Western Blot (Cell lysate)

Western blot analysis of HeLa cell lysate with GFAP (phospho S38) polyclonal antibody (Cat # PAB24756) at 1:500 dilution.

Specification

Product Description	Rabbit polyclonal antibody raised against synthetic phosphopeptide of GFAP.
Immunogen	Synthetic phosphopeptide corresponding to residues surrounding S38 of GFAP.
Host	Rabbit
Theoretical MW (kDa)	55
Reactivity	Human
Specificity	GFAP (phospho S38) polyclonal antibody detects endogenous levels of GFAP protein.
Form	Liquid
Purification	Antigen affinity purification
Recommend Usage	Western Blot (1:500-1:1000) The optimal working dilution should be determined by the end user.
Storage Buffer	In PBS, pH 7.2 (0.09% sodium azide)
Storage Instruction	Store at 4°C. For long term storage store at -20°C. Aliquot to avoid repeated freezing and thawing.

Note

This product contains sodium azide: a POISONOUS AND HAZARDOUS SUBSTANCE which should be handled by trained staff only.

Applications

- Western Blot (Cell lysate)

Western blot analysis of HeLa cell lysate with GFAP (phospho S38) polyclonal antibody (Cat # PAB24756) at 1:500 dilution.

Gene Info — GFAP

Entrez GeneID [2670](#)

Gene Name GFAP

Gene Alias FLJ45472

Gene Description glial fibrillary acidic protein

Omim ID [137780 203450](#)

Gene Ontology [Hyperlink](#)

Gene Summary This gene encodes one of the major intermediate filament proteins of mature astrocytes. It is used as a marker to distinguish astrocytes from other glial cells during development. Mutations in this gene cause Alexander disease, a rare disorder of astrocytes in the central nervous system. Alternative splicing results in multiple transcript variants encoding distinct isoforms. [provided by RefSeq]

Other Designations -

Disease

- [Alzheimer disease](#)
- [Cognition](#)