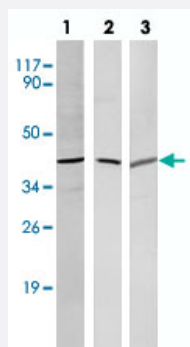


SOX2 polyclonal antibody

Catalog # PAB24743 Size 100 uL

Applications



Western Blot

Western blot analysis of 293A cell lysate (lane 1), mouse brain (lane 2) and rat liver (lane 3) tissue lysate with SOX2 polyclonal antibody (Cat # PAB24743) at 1:5000 dilution.

Specification

Product Description	Rabbit polyclonal antibody raised against synthetic peptide of SOX2.
Immunogen	A synthetic peptide corresponding to SOX2.
Host	Rabbit
Theoretical MW (kDa)	43
Reactivity	Human, Mouse, Rat
Specificity	SOX2 polyclonal antibody detects endogenous levels of SOX2 protein.
Form	Liquid
Purification	Antigen affinity purification
Concentration	1 mg/mL
Recommend Usage	Western Blot (1:1000-1:5000) The optimal working dilution should be determined by the end user.
Storage Buffer	In PBS, pH 7.2 (0.05% sodium azide)

Storage Instruction

Store at 4°C. For long term storage store at -20°C.
Aliquot to avoid repeated freezing and thawing.

Note

This product contains sodium azide: a POISONOUS AND HAZARDOUS SUBSTANCE which should be handled by trained staff only.

Applications

- Western Blot

Western blot analysis of 293A cell lysate (lane 1), mouse brain (lane 2) and rat liver (lane 3) tissue lysate with SOX2 polyclonal antibody (Cat # PAB24743) at 1:5000 dilution.

Gene Info — SOX2

Entrez GeneID[6657](#)**Gene Name**

SOX2

Gene Alias

ANOP3, MCOPS3, MGC2413

Gene Description

SRY (sex determining region Y)-box 2

Omim ID[184429](#) [206900](#)**Gene Ontology**[Hyperlink](#)**Gene Summary**

This intronless gene encodes a member of the SRY-related HMG-box (SOX) family of transcription factors involved in the regulation of embryonic development and in the determination of cell fate. The product of this gene is required for stem-cell maintenance in the central nervous system, and also regulates gene expression in the stomach. Mutations in this gene have been associated with optic nerve hypoplasia and with syndromic microphthalmia, a severe form of structural eye malformation. This gene lies within an intron of another gene called SOX2 overlapping transcript (SOX2 OT). [provided by RefSeq]

Other Designations

SRY-related HMG-box gene 2|sex-determining region Y-box 2|transcription factor SOX2

Disease

- [Anophthalmos](#)
- [Coloboma](#)
- [Diabetes Mellitus](#)

- [Diabetic Nephropathies](#)
- [Genetic Predisposition to Disease](#)
- [Kidney Failure](#)
- [Microphthalmos](#)
- [Myopia](#)