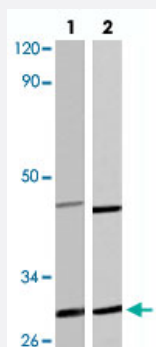


# HSPB1 (phospho S15) polyclonal antibody

Catalog # PAB24730

Size 100 uL

## Applications



### Western Blot (Cell lysate)

Western blot analysis of HeLa (lane 1) and PC-12 (lane 2) cell lysate with HSPB1 (phospho S15) polyclonal antibody (Cat # PAB24730) at 1:500 dilution.

## Specification

<b>Product Description</b>	Rabbit polyclonal antibody raised against synthetic phosphopeptide of HSPB1.
<b>Immunogen</b>	Synthetic phosphopeptide corresponding to residues surrounding S15 of HSPB1.
<b>Host</b>	Rabbit
<b>Theoretical MW (kDa)</b>	~27.0
<b>Reactivity</b>	Human, Rat
<b>Specificity</b>	HSPB1 (phospho S15) polyclonal antibody detects endogenous levels of HSPB1 protein.
<b>Form</b>	Liquid
<b>Purification</b>	Antigen affinity purification
<b>Recommend Usage</b>	Western Blot (1:500-1:1000) The optimal working dilution should be determined by the end user.
<b>Storage Buffer</b>	In PBS, pH 7.2 (0.09% sodium azide)

**Storage Instruction**

Store at 4°C. For long term storage store at -20°C.  
Aliquot to avoid repeated freezing and thawing.

**Note**

This product contains sodium azide: a POISONOUS AND HAZARDOUS SUBSTANCE which should be handled by trained staff only.

## Applications

- Western Blot (Cell lysate)

Western blot analysis of HeLa (lane 1) and PC-12 (lane 2) cell lysate with HSPB1 (phospho S15) polyclonal antibody (Cat # PAB24730) at 1:500 dilution.

## Gene Info — HSPB1

**Entrez GeneID**[3315](#)**Gene Name**

HSPB1

**Gene Alias**

CMT2F, DKFZp586P1322, HMN2B, HS.76067, HSP27, HSP28, Hsp25, SRP27

**Gene Description**

heat shock 27kDa protein 1

**Omim ID**[602195 606595 608634](#)**Gene Ontology**[Hyperlink](#)**Gene Summary**

The protein encoded by this gene is induced by environmental stress and developmental changes. The encoded protein is involved in stress resistance and actin organization and translocates from the cytoplasm to the nucleus upon stress induction. Defects in this gene are a cause of Charcot-Marie-Tooth disease type 2F (CMT2F) and distal hereditary motor neuropathy (dHMN). [provided by RefSeq]

**Other Designations**

OTTHUMP00000024846|estrogen-regulated 24 kDa protein|heat shock 27kD protein 1|heat shock protein beta-1|stress-responsive protein 27

## Pathway

- [MAPK signaling pathway](#)
- [VEGF signaling pathway](#)

## Disease

- [Adenocarcinoma](#)
- [Carcinoma](#)
- [Charcot-Marie-Tooth Disease](#)
- [Diabetic Nephropathies](#)
- [Genetic Predisposition to Disease](#)
- [Lung Neoplasms](#)
- [Small Cell Lung Carcinoma](#)