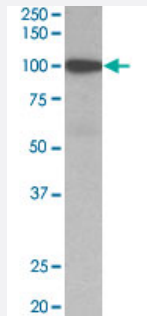


GSN polyclonal antibody

Catalog # PAB24688 Size 100 ug

Applications



Western Blot (Tissue lysate)

GSN polyclonal antibody (Cat # PAB24688) (1 ug/mL) staining of human duodenum lysate (35 ug protein in RIPA buffer). Primary incubation was 1 hour. Detected by chemiluminescence.

Specification

Product Description Goat polyclonal antibody raised against synthetic peptide of GSN.

Immunogen A synthetic peptide corresponding to N-terminus of human GSN.

Sequence PQGRVPEARPNSC

Host Goat

Theoretical MW (kDa) 87.5

Reactivity Human

Form Liquid

Purification Antigen affinity purification

Concentration 0.5 mg/mL

Recommend Usage ELISA (1:64000)
Western Blot (1-3 ug/mL)
The optimal working dilution should be determined by the end user.

Storage Buffer In Tris saline, pH 7.3 (0.5 % BSA, 0.02% sodium azide)

Storage Instruction

Store at -20°C.
Aliquot to avoid repeated freezing and thawing.

Note

This product contains sodium azide: a POISONOUS AND HAZARDOUS SUBSTANCE which should be handled by trained staff only.

Applications

- Western Blot (Tissue lysate)

GSN polyclonal antibody (Cat # PAB24688) (1 ug/mL) staining of human duodenum lysate (35 ug protein in RIPA buffer). Primary incubation was 1 hour. Detected by chemiluminescence.

- Enzyme-linked Immunoabsorbent Assay

Gene Info — GSN

Entrez GeneID[2934](#)**Protein Accession#**[NP_000168.1;NP_937895.1;NP_001121138.1](#)**Gene Name**

GSN

Gene Alias

DKFZp313L0718

Gene Description

gelsolin (amyloidosis, Finnish type)

Omim ID[105120 137350](#)**Gene Ontology**[Hyperlink](#)**Gene Summary**

The protein encoded by this gene binds to the "plus" ends of actin monomers and filaments to prevent monomer exchange. The encoded calcium-regulated protein functions in both assembly and disassembly of actin filaments. Defects in this gene are a cause of familial amyloidosis Finnish type (FAF). Multiple transcript variants encoding several different isoforms have been found for this gene. [provided by RefSeq]

Other Designations

OTTHUMP00000022011|OTTHUMP00000162202|gelsolin

Pathway

- [Fc gamma R-mediated phagocytosis](#)

- [Regulation of actin cytoskeleton](#)

Disease

- [Tobacco Use Disorder](#)