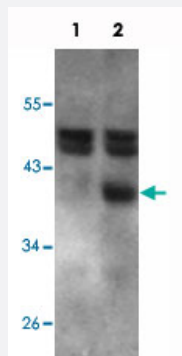


RCAN1 polyclonal antibody

Catalog # PAB24686 Size 100 ug

Applications



Western Blot (Tissue lysate)

RCAN1 polyclonal antibody (Cat # PAB24686) (1 ug/ml) staining of mouse brain (lane 2) and KO mouse brain (lane 1) lysates (35 ug protein in RIPA buffer). Primary incubation was 1 hour. Detected by chemiluminescence.

Specification

Product Description	Goat polyclonal antibody raised against synthetic peptide of RCAN1.
Immunogen	A synthetic peptide corresponding to internal region of human RCAN1.
Sequence	CHIGSSHLAPPNPD
Host	Goat
Theoretical MW (kDa)	40
Reactivity	Mouse
Form	Liquid
Purification	Antigen affinity purification
Concentration	0.5 mg/mL
Recommend Usage	ELISA (1:32000) Western Blot (1-3 ug/mL) The optimal working dilution should be determined by the end user.

Storage Buffer	In Tris saline, pH 7.3 (0.5 % BSA, 0.02% sodium azide)
Storage Instruction	Store at -20°C. Aliquot to avoid repeated freezing and thawing.
Note	This product contains sodium azide: a POISONOUS AND HAZARDOUS SUBSTANCE which should be handled by trained staff only.

Applications

- Western Blot (Tissue lysate)

RCAN1 polyclonal antibody (Cat # PAB24686) (1 ug/ml) staining of mouse brain (lane 2) and KO mouse brain (lane 1) lysates (35 ug protein in RIPA buffer). Primary incubation was 1 hour. Detected by chemiluminescence.

- Enzyme-linked Immunoabsorbent Assay

Gene Info — RCAN1

Entrez GeneID	1827
Protein Accession#	NP_004405.3;NP_981962.1;NP_981963.1
Gene Name	RCAN1
Gene Alias	ADAPT78, CSP1, DSC1, DSCR1, MCIP1, RCN1
Gene Description	regulator of calcineurin 1
Omim ID	602917
Gene Ontology	Hyperlink
Gene Summary	The protein encoded by this gene interacts with calcineurin A and inhibits calcineurin-dependent signaling pathways, possibly affecting central nervous system development. This gene is located in the minimal candidate region for the Down syndrome phenotype, and is overexpressed in the brain of Down syndrome fetuses. Chronic overexpression of this gene may lead to neurofibrillary tangles such as those associated with Alzheimer disease. Three transcript variants encoding three different isoforms have been found for this gene. [provided by RefSeq]
Other Designations	Down syndrome candidate region 1 Down syndrome critical region gene 1 calciopressin 1 calcium and oxidant-inducible mRNA modulatory calcineurin-interacting protein 1 myocyte-enriched calcineurin-interacting protein 1 near DSCR proline-rich protein

Disease

- [Cognition](#)
- [Genetic Predisposition to Disease](#)
- [Schizophrenia](#)
- [Tobacco Use Disorder](#)