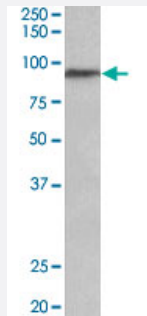


# PTCHD3 polyclonal antibody

Catalog # PAB24685      Size 100 ug

## Applications



### Western Blot (Tissue lysate)

PTCHD3 polyclonal antibody (Cat # PAB24685) (0.3 ug/ml) staining of human testis lysate (35 ug protein in RIPA buffer). Primary incubation was 1 hour. Detected by chemiluminescence.

## Specification

<b>Product Description</b>	Goat polyclonal antibody raised against synthetic peptide of PTCHD3.
<b>Immunogen</b>	A synthetic peptide corresponding to internal region of human PTCHD3.
<b>Sequence</b>	CKKVDYWDKDVRQ
<b>Host</b>	Goat
<b>Theoretical MW (kDa)</b>	90
<b>Reactivity</b>	Human
<b>Form</b>	Liquid
<b>Purification</b>	Antigen affinity purification
<b>Concentration</b>	0.5 mg/mL
<b>Recommend Usage</b>	ELISA (1:64000) Western Blot (0.3-1 ug/mL) The optimal working dilution should be determined by the end user.
<b>Storage Buffer</b>	In Tris saline, pH 7.3 (0.5 % BSA, 0.02% sodium azide)

**Storage Instruction**

Store at -20°C.  
Aliquot to avoid repeated freezing and thawing.

**Note**

This product contains sodium azide: a POISONOUS AND HAZARDOUS SUBSTANCE which should be handled by trained staff only.

## Applications

- Western Blot (Tissue lysate)

PTCHD3 polyclonal antibody (Cat # PAB24685) (0.3 ug/ml) staining of human testis lysate (35 ug protein in RIPA buffer). Primary incubation was 1 hour. Detected by chemiluminescence.

- Enzyme-linked Immunoabsorbent Assay

## Gene Info — PTCHD3

**Entrez GeneID**[374308](#)**Protein Accession#**[NP\\_001030014.2](#)**Gene Name**

PTCHD3

**Gene Alias**

FLJ44037, MGC129888, PTR

**Gene Description**

patched domain containing 3

**Gene Ontology**[Hyperlink](#)**Other Designations**

-