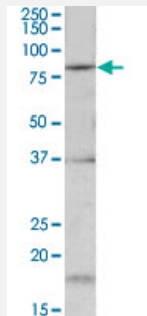


Kcnc3 polyclonal antibody

Catalog # PAB24631 Size 100 ug

Applications



Western Blot (Tissue lysate)

Kcnc3 polyclonal antibody (Cat # PAB24631) (0.2 ug/mL) staining of mouse fetal brain lysate (35 ug protein in RIPA buffer). Primary incubation was 1 hour. Detected by chemiluminescence.

Specification

Product Description	Goat polyclonal antibody raised against synthetic peptide of Kcnc3.
Immunogen	A synthetic peptide corresponding to internal region of mouse Kcnc3.
Sequence	C-QEEVIETNRADPR
Host	Goat
Theoretical MW (kDa)	80
Reactivity	Mouse
Form	Liquid
Purification	Antigen affinity purification
Recommend Usage	ELISA (1:64000) Western Blot (0.2-0.6 ug/mL) The optimal working dilution should be determined by the end user.
Storage Buffer	In 0.5 mg/mL Tris saline, pH 7.3 (0.02% sodium azide, 0.5% BSA)

Storage Instruction

Store at -20°C.
Aliquot to avoid repeated freezing and thawing.

Note

This product contains sodium azide: a POISONOUS AND HAZARDOUS SUBSTANCE which should be handled by trained staff only.

Applications

- Western Blot (Tissue lysate)

Kcnc3 polyclonal antibody (Cat # PAB24631) (0.2 ug/mL) staining of mouse fetal brain lysate (35 ug protein in RIPA buffer). Primary incubation was 1 hour. Detected by chemiluminescence.

- Enzyme-linked Immunoabsorbent Assay

Gene Info — Kcnc3

Entrez GeneID [16504](#)

Protein Accession# [NP_032448.2](#)

Gene Name Kcnc3

Gene Alias KShIIID, Kcr2-3, Kv3.3

Gene Description potassium voltage gated channel, Shaw-related subfamily, member 3

Gene Ontology [Hyperlink](#)

Gene Summary Shaw-related subfamily

Other Designations OTTMUSP00000024528