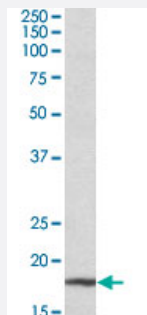


# Cdkn2a polyclonal antibody

Catalog # PAB24630

Size 100 ug

## Applications



### Western Blot (Tissue lysate)

Cdkn2a polyclonal antibody (Cat # PAB24630) (0.3 ug/mL) staining of mouse liver lysate (35 ug protein in RIPA buffer). Primary incubation was 1 hour. Detected by chemiluminescence.

## Specification

<b>Product Description</b>	Goat polyclonal antibody raised against synthetic peptide of Cdkn2a.
<b>Immunogen</b>	A synthetic peptide corresponding to internal region of mouse Cdkn2a.
<b>Sequence</b>	C-RRGPHRNPGPGDDD
<b>Host</b>	Goat
<b>Theoretical MW (kDa)</b>	18
<b>Reactivity</b>	Mouse
<b>Specificity</b>	This antibody is expected to recognize isoform p19ARF (NP_034007.1) only.
<b>Form</b>	Liquid
<b>Purification</b>	Antigen affinity purification
<b>Recommend Usage</b>	ELISA (1:64000) Western Blot (0.3-1 ug/mL) The optimal working dilution should be determined by the end user.
<b>Storage Buffer</b>	In 0.5 mg/mL Tris saline, pH 7.3 (0.02% sodium azide, 0.5% BSA)

**Storage Instruction**

Store at -20°C.  
Aliquot to avoid repeated freezing and thawing.

**Note**

This product contains sodium azide: a POISONOUS AND HAZARDOUS SUBSTANCE which should be handled by trained staff only.

## Applications

- Western Blot (Tissue lysate)

Cdkn2a polyclonal antibody (Cat # PAB24630) (0.3 ug/mL) staining of mouse liver lysate (35 ug protein in RIPA buffer). Primary incubation was 1 hour. Detected by chemiluminescence.

- Enzyme-linked Immunoabsorbent Assay

## Gene Info — Cdkn2a

**Entrez GeneID**[12578](#)**Protein Accession#**[NP\\_034007.1](#)**Gene Name**

Cdkn2a

**Gene Alias**

ARF-INK4a, Arf, INK4a-ARF, Ink4a/Arf, MTS1, Pctr1, p16, p16(INK4a), p16INK4a, p19&lt;ARF&gt;, p19ARF

**Gene Description**

cyclin-dependent kinase inhibitor 2A

**Gene Ontology**[Hyperlink](#)**Gene Summary**

inhibits CDK4|cyclin-dependent kinase inhibitor protein|mitochondrial smARF

**Other Designations**

OTTMUSP00000008143|cyclin-dependent kinase inhibitor 2A (p16, inhibits CDK4)|cyclin-dependent kinase inhibitor protein|mitochondrial smARF