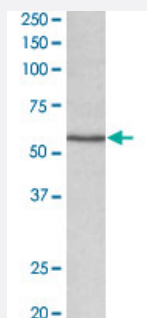


# Cyp1a1 polyclonal antibody

Catalog # PAB24629      Size 100 ug

## Applications



### Western Blot (Tissue lysate)

Cyp1a1 polyclonal antibody (Cat # PAB24629) (0.1 ug/mL) staining of rat lung lysate (35 ug protein in RIPA buffer). Primary incubation was 1 hour. Detected by chemiluminescence.

## Specification

**Product Description** Goat polyclonal antibody raised against synthetic peptide of Cyp1a1.

**Immunogen** A synthetic peptide corresponding to internal region of mouse Cyp1a1.

**Sequence** C-QDRKLDENANVQLSD

**Host** Goat

**Theoretical MW (kDa)** 55

**Reactivity** Rat

**Specificity** This antibody is not expected to cross-react with the similar P450 1A2

**Form** Liquid

**Purification** Antigen affinity purification

**Recommend Usage** ELISA (1:64000)  
Western Blot (0.1-0.3 ug/mL)  
The optimal working dilution should be determined by the end user.

**Storage Buffer** In 0.5 mg/mL Tris saline, pH 7.3 (0.02% sodium azide, 0.5% BSA)

**Storage Instruction**

Store at -20°C.  
Aliquot to avoid repeated freezing and thawing.

**Note**

This product contains sodium azide: a POISONOUS AND HAZARDOUS SUBSTANCE which should be handled by trained staff only.

## Applications

- Western Blot (Tissue lysate)

Cyp1a1 polyclonal antibody (Cat # PAB24629) (0.1 ug/mL) staining of rat lung lysate (35 ug protein in RIPA buffer). Primary incubation was 1 hour. Detected by chemiluminescence.

- Enzyme-linked Immunoabsorbent Assay

## Gene Info — Cyp1a1

**Entrez GeneID**[13076](#)**Protein Accession#**[NP\\_001129531.1](#)**Gene Name**

Cyp1a1

**Gene Alias**

AHH, AHRR, CP11, Cyp1a2, P450-1

**Gene Description**

cytochrome P450, family 1, subfamily a, polypeptide 1

**Gene Ontology**[Hyperlink](#)**Gene Summary**

cytochrome P450

**Other Designations**

aromatic compound inducible|cytochrome P450 family 1 subfamily a polypeptide 2|cytochrome P450 subfamily I, polypeptide 1|cytochrome P450, 1a1, aromatic compound inducible