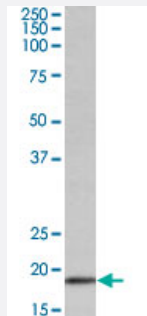


# Wfdc1 polyclonal antibody

Catalog # PAB24625      Size 100 ug

## Applications



### Western Blot (Tissue lysate)

Wfdc1 polyclonal antibody (Cat # PAB24625) (0.3 ug/mL) staining of mouse heart lysate (35 ug protein in RIPA buffer). Primary incubation was 1 hour. Detected by chemiluminescence.

## Specification

<b>Product Description</b>	Goat polyclonal antibody raised against synthetic peptide of Wfdc1.
<b>Immunogen</b>	A synthetic peptide corresponding to near N-terminus of mouse Wfdc1.
<b>Sequence</b>	C-RQRLHKEYPEGDSKN
<b>Host</b>	Goat
<b>Theoretical MW (kDa)</b>	19
<b>Reactivity</b>	Mouse
<b>Form</b>	Liquid
<b>Purification</b>	Antigen affinity purification
<b>Recommend Usage</b>	ELISA (1:16000) Western Blot (0.3-1 ug/mL) The optimal working dilution should be determined by the end user.
<b>Storage Buffer</b>	In 0.5 mg/mL Tris saline, pH 7.3 (0.02% sodium azide, 0.5% BSA)

**Storage Instruction**

Store at -20°C.  
Aliquot to avoid repeated freezing and thawing.

**Note**

This product contains sodium azide: a POISONOUS AND HAZARDOUS SUBSTANCE which should be handled by trained staff only.

## Applications

- Western Blot (Tissue lysate)

Wfdc1 polyclonal antibody (Cat # PAB24625) (0.3 ug/mL) staining of mouse heart lysate (35 ug protein in RIPA buffer). Primary incubation was 1 hour. Detected by chemiluminescence.

- Enzyme-linked Immunoabsorbent Assay

## Gene Info — Wfdc1

**Entrez GeneID** [67866](#)

**Protein Accession#** [NP\\_075884.1](#)

**Gene Name** Wfdc1

**Gene Alias** 2310058A03Rik, ps20

**Gene Description** WAP four-disulfide core domain 1

**Gene Ontology** [Hyperlink](#)

**Other Designations** -