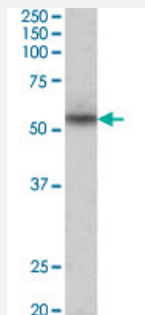


# Mare polyclonal antibody

Catalog # PAB24623      Size 100 ug

## Applications



### Western Blot (Tissue lysate)

Mare polyclonal antibody (Cat # PAB24623) (0.3 ug/mL) staining of human heart lysate (35 ug protein in RIPA buffer). Primary incubation was 1 hour. Detected by chemiluminescence.

## Specification

**Product Description** Goat polyclonal antibody raised against synthetic peptide of Mare.

**Immunogen** A synthetic peptide corresponding to N-terminus of mouse Mare.

**Sequence** C-QRSQEHPASQTNKP

**Host** Goat

**Theoretical MW (kDa)** 55

**Reactivity** Human

**Form** Liquid

**Purification** Antigen affinity purification

**Recommend Usage**  
ELISA (1:16000)  
Western Blot (0.3-1 ug/mL)  
The optimal working dilution should be determined by the end user.

**Storage Buffer** In 0.5 mg/mL Tris saline, pH 7.3 (0.02% sodium azide, 0.5% BSA)

**Storage Instruction**

Store at -20°C.  
Aliquot to avoid repeated freezing and thawing.

**Note**

This product contains sodium azide: a POISONOUS AND HAZARDOUS SUBSTANCE which should be handled by trained staff only.

## Applications

- Western Blot (Tissue lysate)

Mare polyclonal antibody (Cat # PAB24623) (0.3 ug/mL) staining of human heart lysate (35 ug protein in RIPA buffer). Primary incubation was 1 hour. Detected by chemiluminescence.

- Enzyme-linked Immunoabsorbent Assay

## Gene Info — Mare

**Entrez GeneID**[17168](#)**Protein Accession#**[NP\\_853547.1](#)**Gene Name**

Mare

**Gene Alias**

Aag, CGTHBA, HS-26, HS-40, m(alpha)RE

**Gene Description**

alpha globin regulatory element containing gene

**Gene Ontology**[Hyperlink](#)**Other Designations**

-14|alpha globin regulatory element containing