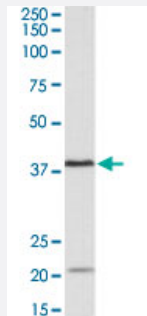


# KLHDC8B polyclonal antibody

Catalog # PAB24618      Size 100 ug

## Applications



### Western Blot (Cell lysate)

KLHDC8B polyclonal antibody (Cat # PAB24618) (0.5 ug/mL) staining of Daudi lysate (35 ug protein in RIPA buffer). Primary incubation was 1 hour. Detected by chemiluminescence.

## Specification

<b>Product Description</b>	Goat polyclonal antibody raised against synthetic peptide of KLHDC8B.
<b>Immunogen</b>	A synthetic peptide corresponding to internal region of human KLHDC8B.
<b>Sequence</b>	C-TKLPRSLRMRDK
<b>Host</b>	Goat
<b>Reactivity</b>	Human
<b>Form</b>	Liquid
<b>Purification</b>	Antigen affinity purification
<b>Recommend Usage</b>	ELISA (1:64000) The optimal working dilution should be determined by the end user.
<b>Storage Buffer</b>	In 0.5 mg/mL Tris saline, pH 7.3 (0.02% sodium azide, 0.5% BSA)
<b>Storage Instruction</b>	Store at -20°C. Aliquot to avoid repeated freezing and thawing.

**Note**

This product contains sodium azide: a POISONOUS AND HAZARDOUS SUBSTANCE which should be handled by trained staff only.

## Applications

- Western Blot (Cell lysate)

KLHDC8B polyclonal antibody (Cat # PAB24618) (0.5 ug/mL) staining of Daudi lysate (35 ug protein in RIPA buffer). Primary incubation was 1 hour. Detected by chemiluminescence.

- Enzyme-linked Immunoabsorbent Assay

## Gene Info — KLHDC8B

Entrez GeneID	<a href="#">200942</a>
---------------	------------------------

Protein Accession#	<a href="#">NP_775817.1</a>
--------------------	-----------------------------

Gene Name	KLHDC8B
-----------	---------

Gene Alias	FLJ11302, MGC35097
------------	--------------------

Gene Description	kelch domain containing 8B
------------------	----------------------------

Gene Ontology	<a href="#">Hyperlink</a>
---------------	---------------------------

Other Designations	-
--------------------	---