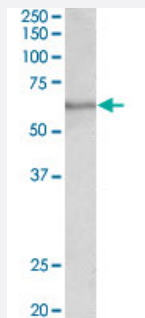


SLC47A2 polyclonal antibody

Catalog # PAB24617 Size 100 ug

Applications



Western Blot (Tissue lysate)

SLC47A2 polyclonal antibody (Cat # PAB24617) (0.1 ug/mL) staining of human testis lysate (35 ug protein in RIPA buffer). Primary incubation was 1 hour. Detected by chemiluminescence.

Specification

Product Description	Goat polyclonal antibody raised against synthetic peptide of SLC47A2.
Immunogen	A synthetic peptide corresponding to near C-terminus of human SLC47A2.
Sequence	C-QRAESTATRPGPEK
Host	Goat
Theoretical MW (kDa)	60
Reactivity	Human
Specificity	This antibody is expected to recognize both reported isoforms (NP_690872.2; NP_001093116.1).
Form	Liquid
Purification	Antigen affinity purification
Recommend Usage	ELISA (1:32000) Western Blot (0.1-0.3 ug/mL) The optimal working dilution should be determined by the end user.
Storage Buffer	In 0.5 mg/mL Tris saline, pH 7.3 (0.02% sodium azide, 0.5% BSA)

Storage Instruction

Store at -20°C.
Aliquot to avoid repeated freezing and thawing.

Note

This product contains sodium azide: a POISONOUS AND HAZARDOUS SUBSTANCE which should be handled by trained staff only.

Applications

- Western Blot (Tissue lysate)

SLC47A2 polyclonal antibody (Cat # PAB24617) (0.1 ug/mL) staining of human testis lysate (35 ug protein in RIPA buffer). Primary incubation was 1 hour. Detected by chemiluminescence.

- Enzyme-linked Immunoabsorbent Assay

Gene Info — SLC47A2

Entrez GeneID[146802](#)**Protein Accession#**[NP_690872.2;NP_001093116.1](#)**Gene Name**

SLC47A2

Gene Alias

FLJ31196, MATE2, MATE2-B, MATE2-K

Gene Description

solute carrier family 47, member 2

Omim ID[609833](#)**Gene Ontology**[Hyperlink](#)**Gene Summary**

This gene encodes a protein belonging to a family of transporters involved in excretion of toxic electrolytes, both endogenous and exogenous, through urine and bile. This transporter family shares homology with the bacterial MATE (multidrug and toxin extrusion) protein family responsible for drug resistance. This gene is one of two members of the MATE transporter family located near each other on chromosome 17. Alternatively spliced transcript variants encoding different isoforms have been identified for this gene. [provided by RefSeq]

Other DesignationsH⁺/organic cation antiporter[multidrug and toxin extrusion 2]

Disease

- [Diabetes Mellitus](#)

- [Tobacco Use Disorder](#)