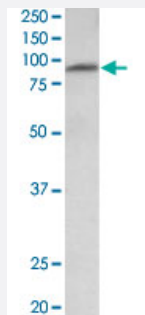


MFSD6 polyclonal antibody

Catalog # PAB24614 Size 100 ug

Applications



Western Blot (Tissue lysate)

MFSD6 polyclonal antibody (Cat # PAB24614) (1 ug/mL) staining of human heart lysate (35 ug protein in RIPA buffer). Primary incubation was 1 hour. Detected by chemiluminescence.

Specification

Product Description	Goat polyclonal antibody raised against synthetic peptide of MFSD6.
Immunogen	A synthetic peptide corresponding to internal region of human MFSD6.
Sequence	C-RPTTHPTNASHQ
Host	Goat
Theoretical MW (kDa)	90
Reactivity	Human
Specificity	The immunizng peptide is thought to represent an extracellular domain.
Form	Liquid
Purification	Antigen affinity purification
Recommend Usage	ELISA (1:16000) Western Blot (1-3 ug/mL) The optimal working dilution should be determined by the end user.
Storage Buffer	In 0.5 mg/mL Tris saline, pH 7.3 (0.02% sodium azide, 0.5% BSA)

Storage Instruction

Store at -20°C.
Aliquot to avoid repeated freezing and thawing.

Note

This product contains sodium azide: a POISONOUS AND HAZARDOUS SUBSTANCE which should be handled by trained staff only.

Applications

- Western Blot (Tissue lysate)

MFSD6 polyclonal antibody (Cat # PAB24614) (1 ug/mL) staining of human heart lysate (35 ug protein in RIPA buffer). Primary incubation was 1 hour. Detected by chemiluminescence.

- Enzyme-linked Immunoabsorbent Assay

Gene Info — MFSD6

Entrez GeneID[54842](#)**Protein Accession#**[NP_060164.3](#)**Gene Name**

MFSD6

Gene Alias

FLJ20160

Gene Description

major facilitator superfamily domain containing 6

Gene Ontology[Hyperlink](#)**Other Designations**

OTTHUMP00000163510

Disease

- [Autistic Disorder](#)
- [Genetic Predisposition to Disease](#)
- [Tobacco Use Disorder](#)