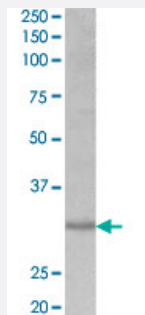


CRLS1 polyclonal antibody

Catalog # PAB24613 Size 100 ug

Applications



Western Blot (Cell lysate)

CRLS1 polyclonal antibody (Cat # PAB24613) (0.2 ug/mL) staining of HEK293 lysate (35 ug protein in RIPA buffer). Primary incubation was 1 hour. Detected by chemiluminescence.

Specification

Product Description	Goat polyclonal antibody raised against synthetic peptide of CRLS1.
Immunogen	A synthetic peptide corresponding to internal region of human CRLS1.
Sequence	C-RSALGSALDPLADK
Host	Goat
Theoretical MW (kDa)	30
Reactivity	Human
Specificity	This antibody is expected to recognize both reported isoforms (NP_061968.1; NP_001120930.1).
Form	Liquid
Purification	Antigen affinity purification
Recommend Usage	ELISA (1:64000) Western Blot (0.2-0.6 ug/mL) The optimal working dilution should be determined by the end user.
Storage Buffer	In 0.5 mg/mL Tris saline, pH 7.3 (0.02% sodium azide, 0.5% BSA)

Storage Instruction

Store at -20°C.
Aliquot to avoid repeated freezing and thawing.

Note

This product contains sodium azide: a POISONOUS AND HAZARDOUS SUBSTANCE which should be handled by trained staff only.

Applications

- Western Blot (Cell lysate)

CRLS1 polyclonal antibody (Cat # PAB24613) (0.2 ug/mL) staining of HEK293 lysate (35 ug protein in RIPA buffer). Primary incubation was 1 hour. Detected by chemiluminescence.

- Enzyme-linked Immunoabsorbent Assay

Gene Info — CRLS1

Entrez GeneID[54675](#)**Protein Accession#**[NP_061968.1;NP_001120930.1](#)**Gene Name**

CRLS1

Gene Alias

C20orf155, CLS1, GCD10, dJ967N21.6

Gene Description

cardiolipin synthase 1

Omim ID[608188](#)**Gene Ontology**[Hyperlink](#)**Other Designations**

GCD10 homolog|OTTHUMP00000030219

Pathway

- [Glycerophospholipid metabolism](#)

- [Metabolic pathways](#)