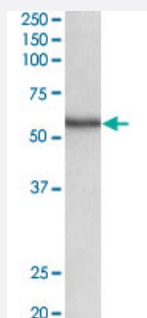


# STK38 polyclonal antibody

Catalog # PAB24610

Size 100 ug

## Applications



### Western Blot (Tissue lysate)

STK38 polyclonal antibody (Cat # PAB24610) (0.5 ug/mL) staining of human spleen lysate (35 ug protein in RIPA buffer). Primary incubation was 1 hour. Detected by chemiluminescence.

## Specification

<b>Product Description</b>	Goat polyclonal antibody raised against synthetic peptide of STK38.
<b>Immunogen</b>	A synthetic peptide corresponding to near C-terminus of human STK38.
<b>Sequence</b>	C-KPTVATSNHPET
<b>Host</b>	Goat
<b>Theoretical MW (kDa)</b>	55
<b>Reactivity</b>	Human, Rat
<b>Specificity</b>	This antibody is NOT expected to cross-react with STK38L (GeneID 23012).
<b>Form</b>	Liquid
<b>Purification</b>	Antigen affinity purification
<b>Recommend Usage</b>	ELISA (1:32000) Western Blot (0.5-2 ug/mL) The optimal working dilution should be determined by the end user.
<b>Storage Buffer</b>	In 0.5 mg/mL Tris saline, pH 7.3 (0.02% sodium azide, 0.5% BSA)

**Storage Instruction**

Store at -20°C.  
Aliquot to avoid repeated freezing and thawing.

**Note**

This product contains sodium azide: a POISONOUS AND HAZARDOUS SUBSTANCE which should be handled by trained staff only.

## Applications

- Western Blot (Tissue lysate)

STK38 polyclonal antibody (Cat # PAB24610) (0.5 ug/mL) staining of human spleen lysate (35 ug protein in RIPA buffer). Primary incubation was 1 hour. Detected by chemiluminescence.

- Enzyme-linked Immunoabsorbent Assay

## Gene Info — STK38

**Entrez GeneID** [11329](#)

**Protein Accession#** [NP\\_009202.1](#)

**Gene Name** STK38

**Gene Alias** NDR, NDR1

**Gene Description** serine/threonine kinase 38

**Omim ID** [606964](#)

**Gene Ontology** [Hyperlink](#)

**Other Designations** Ndr Ser/Thr kinase-like protein|OTTHUMP00000016293|nuclear Dbf2-related 1|serine threonine protein kinase

## Disease

- [Attention Deficit Disorder with Hyperactivity](#)
- [Autistic Disorder](#)
- [NARP](#)