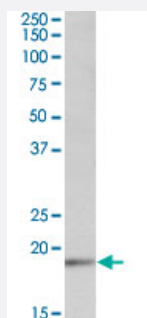


# UBE2C polyclonal antibody

Catalog # PAB24608

Size 100 ug

## Applications



### Western Blot (Cell lysate)

UBE2C polyclonal antibody (Cat # PAB24608) (1 ug/mL) staining of HEK293 lysate (35 ug protein in RIPA buffer). Primary incubation was 1 hour. Detected by chemiluminescence.

## Specification

<b>Product Description</b>	Goat polyclonal antibody raised against synthetic peptide of UBE2C.
<b>Immunogen</b>	A synthetic peptide corresponding to internal region of human UBE2C.
<b>Sequence</b>	C-SGDKGISAFPESDN
<b>Host</b>	Goat
<b>Theoretical MW (kDa)</b>	19
<b>Reactivity</b>	Human
<b>Specificity</b>	This antibody is expected to recognize isoforms 1 (NP_008950.1), 2 (NP_861515.1) and 4 (NP_861517.1). Reported variants NP_861517.1 and NP_861518.1 represent identical protein.
<b>Form</b>	Liquid
<b>Purification</b>	Antigen affinity purification
<b>Recommend Usage</b>	ELISA (1:8000) Western Blot (1-3 ug/mL) The optimal working dilution should be determined by the end user.

Storage Buffer	In 0.5 mg/mL Tris saline, pH 7.3 (0.02% sodium azide, 0.5% BSA)
Storage Instruction	Store at -20°C. Aliquot to avoid repeated freezing and thawing.
Note	This product contains sodium azide: a POISONOUS AND HAZARDOUS SUBSTANCE which should be handled by trained staff only.

## Applications

- Western Blot (Cell lysate)

UBE2C polyclonal antibody (Cat # PAB24608) (1 ug/mL) staining of HEK293 lysate (35 ug protein in RIPA buffer). Primary incubation was 1 hour. Detected by chemiluminescence.

- Enzyme-linked Immunoabsorbent Assay

## Gene Info — UBE2C

Entrez GeneID	<a href="#">11065</a>
Protein Accession#	<a href="#">NP_008950.1;NP_861515.1;NP_861517.1</a>
Gene Name	UBE2C
Gene Alias	UBCH10, dJ447F3.2
Gene Description	ubiquitin-conjugating enzyme E2C
Omim ID	<a href="#">605574</a>
Gene Ontology	<a href="#">Hyperlink</a>

Gene Summary	The modification of proteins with ubiquitin is an important cellular mechanism for targeting abnormal or short-lived proteins for degradation. Ubiquitination involves at least three classes of enzymes: ubiquitin-activating enzymes, or E1s, ubiquitin-conjugating enzymes, or E2s, and ubiquitin-protein ligases, or E3s. This gene encodes a member of the E2 ubiquitin-conjugating enzyme family. This enzyme is required for the destruction of mitotic cyclins and for cell cycle progression. Multiple transcript variants encoding different isoforms have been found for this gene. [provided by RefSeq]
--------------	---

Other Designations	OTTHUMP00000031653 OTTHUMP00000031655 cyclin-selective ubiquitin carrier protein mitotic-specific ubiquitin-conjugating enzyme ubiquitin carrier protein E2-C ubiquitin-protein ligase C
--------------------	--

## Pathway

- [Ubiquitin mediated proteolysis](#)

## Disease

- [Cardiovascular Diseases](#)
- [Diabetes Mellitus](#)
- [Edema](#)