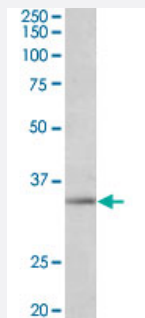


SPON2 polyclonal antibody

Catalog # PAB24607 Size 100 ug

Applications



Western Blot (Cell lysate)

SPON2 polyclonal antibody (Cat # PAB24607) (1 ug/mL) staining of A-549 lysate (35 ug protein in RIPA buffer). Primary incubation was 1 hour. Detected by chemiluminescence.

Specification

Product Description	Goat polyclonal antibody raised against synthetic peptide of SPON2.
Immunogen	A synthetic peptide corresponding to near C-terminus of human SPON2.
Sequence	C-RTRYVRVQPANNGSP
Host	Goat
Theoretical MW (kDa)	35
Reactivity	Human
Specificity	Reported variants represent identical protein: NP_036577.1, NP_001121797.1, NP_001185950.1
Form	Liquid
Purification	Antigen affinity purification
Recommend Usage	ELISA (1:16000) Western Blot (1-3 ug/mL) The optimal working dilution should be determined by the end user.
Storage Buffer	In 0.5 mg/mL Tris saline, pH 7.3 (0.02% sodium azide, 0.5% BSA)

Storage Instruction

Store at -20°C.
Aliquot to avoid repeated freezing and thawing.

Note

This product contains sodium azide: a POISONOUS AND HAZARDOUS SUBSTANCE which should be handled by trained staff only.

Applications

- Western Blot (Cell lysate)

SPON2 polyclonal antibody (Cat # PAB24607) (1 ug/mL) staining of A-549 lysate (35 ug protein in RIPA buffer). Primary incubation was 1 hour. Detected by chemiluminescence.

- Enzyme-linked Immunoabsorbent Assay

Gene Info — SPON2

Entrez GeneID [10417](#)

Protein Accession# [NP_036577.1](#)

Gene Name SPON2

Gene Alias DIL-1, DIL1, M-spondin, Mindin

Gene Description spondin 2, extracellular matrix protein

Omim ID [605918](#)

Gene Ontology [Hyperlink](#)

Gene Summary O

Other Designations -

Disease

- [Tobacco Use Disorder](#)