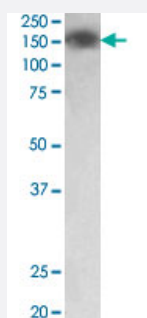


MYLK polyclonal antibody

Catalog # PAB24595

Size 100 ug

Applications



Western Blot (Tissue lysate)

MYLK polyclonal antibody (Cat # PAB24595) (0.03 ug/mL) staining of human colon lysate (35 ug protein in RIPA buffer). Primary incubation was 1 hour. Detected by chemiluminescence.

Specification

Product Description	Goat polyclonal antibody raised against synthetic peptide of MYLK.
Immunogen	A synthetic peptide corresponding to internal region of human MYLK.
Sequence	C-KDTKNMEAKKLSKD
Host	Goat
Theoretical MW (kDa)	150
Reactivity	Human
Specificity	This antibody is expected to recognise all reported isoforms (NP_444253.3; NP_444254.3 ; NP_444255.3 and NP_444256.3).
Form	Liquid
Purification	Antigen affinity purification
Recommend Usage	ELISA (1:8000) Western Blot (0.01-0.03 ug/mL) The optimal working dilution should be determined by the end user.

Storage Buffer	In 0.5 mg/mL Tris saline, pH 7.3 (0.02% sodium azide, 0.5% BSA)
Storage Instruction	Store at -20°C. Aliquot to avoid repeated freezing and thawing.
Note	This product contains sodium azide: a POISONOUS AND HAZARDOUS SUBSTANCE which should be handled by trained staff only.

Applications

- Western Blot (Tissue lysate)

MYLK polyclonal antibody (Cat # PAB24595) (0.03 ug/mL) staining of human colon lysate (35 ug protein in RIPA buffer). Primary incubation was 1 hour. Detected by chemiluminescence.

- Enzyme-linked Immunoabsorbent Assay

Gene Info — MYLK

Entrez GeneID	4638
Protein Accession#	NP_444253.3;NP_444254.3;NP_444255.3;NP_444256.3
Gene Name	MYLK
Gene Alias	DKFZp686I10125, FLJ12216, KRP, MLCK, MLCK1, MLCK108, MLCK210, MSTP083, MYLK1, smMLCK
Gene Description	myosin light chain kinase
Omim ID	600922
Gene Ontology	Hyperlink

Gene Summary	This gene, a muscle member of the immunoglobulin gene superfamily, encodes myosin light chain kinase which is a calcium/calmodulin dependent enzyme. This kinase phosphorylates myosin regulatory light chains to facilitate myosin interaction with actin filaments to produce contractile activity. This gene encodes both smooth muscle and nonmuscle isoforms. In addition, using a separate promoter in an intron in the 3' region, it encodes telokin, a small protein identical in sequence to the C-terminus of myosin light chain kinase, that is independently expressed in smooth muscle and functions to stabilize unphosphorylated myosin filaments. A pseudogene is located on the p arm of chromosome 3. Four transcript variants that produce four isoforms of the calcium/calmodulin dependent enzyme have been identified as well as two transcripts that produce two isoforms of telokin. Additional variants have been identified but lack full length transcripts. [provided by RefSeq]
--------------	--

Other Designations	OTTHUMP00000180642 OTTHUMP00000180643 myosin, light polypeptide kinase smooth muscle myosin light chain kinase
--------------------	--

Pathway

- [Calcium signaling pathway](#)
- [Focal adhesion](#)
- [Regulation of actin cytoskeleton](#)
- [Vascular smooth muscle contraction](#)

Disease

- [Asthma](#)
- [Cardiovascular Diseases](#)
- [Coronary Artery Disease](#)
- [Critical Illness](#)
- [Diabetes Mellitus](#)
- [Edema](#)
- [Genetic Predisposition to Disease](#)
- [Heart Defects](#)
- [Hypertension](#)
- [Kidney Failure](#)
- [Puerperal Disorders](#)
- [Respiratory Distress Syndrome](#)
- [Rhabdomyolysis](#)
- [Sepsis](#)
- [Streptococcal Infections](#)
- [Wounds and Injuries](#)