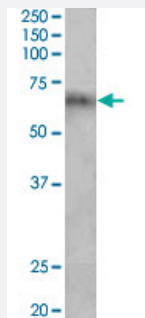


Cyp2d5 polyclonal antibody

Catalog # PAB24585 Size 100 ug

Applications



Western Blot (Tissue lysate)

Cyp2d5 polyclonal antibody (Cat # PAB24585) (2 ug/mL) staining of rat spleen lysate (35 ug protein in RIPA buffer). Primary incubation was 1 hour. Detected by chemiluminescence.

Specification

Product Description Goat polyclonal antibody raised against synthetic peptide of Cyp2d5.

Immunogen A synthetic peptide corresponding to internal region of rat Cyp2d5.

Sequence C-DAFTAQNGRSINPK

Host Goat

Theoretical MW (kDa) 65

Reactivity Rat

Form Liquid

Purification Antigen affinity purification

Recommend Usage
ELISA (1:32000)
Western Blot (1-3 ug/mL)
The optimal working dilution should be determined by the end user.

Storage Buffer In 0.5 mg/mL Tris saline, pH 7.3 (0.02% sodium azide, 0.5% BSA)

Storage Instruction

Store at -20°C.
Aliquot to avoid repeated freezing and thawing.

Note

This product contains sodium azide: a POISONOUS AND HAZARDOUS SUBSTANCE which should be handled by trained staff only.

Applications

- Western Blot (Tissue lysate)

Cyp2d5 polyclonal antibody (Cat # PAB24585) (2 ug/mL) staining of rat spleen lysate (35 ug protein in RIPA buffer). Primary incubation was 1 hour. Detected by chemiluminescence.

- Enzyme-linked Immunoabsorbent Assay

Gene Info — Cyp2d5

Entrez GeneID[286963](#)**Protein Accession#**[NP_775426.1](#)**Gene Name**

Cyp2d5

Gene Alias

Cyp2d10, MGC108540

Gene Description

cytochrome P450, family 2, subfamily d, polypeptide 5

Gene Ontology[Hyperlink](#)**Gene Summary**

cytochrome P450

Other Designations

cytochrome P450, family 2, subfamily d, polypeptide 10|cytochrome P450CMF1b|debrisoquine 4-hydroxylase