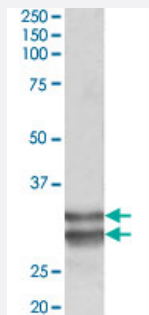


KLF13 polyclonal antibody

Catalog # PAB24573 Size 100 ug

Applications



Western Blot (Tissue lysate)

KLF13 polyclonal antibody (Cat # PAB24573) (0.1 ug/mL) staining of human heart lysate (35 ug protein in RIPA buffer). Primary incubation was 1 hour. Detected by chemiluminescence.

Specification

Product Description	Goat polyclonal antibody raised against synthetic peptide of KLF13.
Immunogen	A synthetic peptide corresponding to amino acids 45-58 at internal region of human KLF13.
Sequence	C-TLPRVEERRDGKDS
Host	Goat
Theoretical MW (kDa)	30, 28
Reactivity	Human
Form	Liquid
Purification	Antigen affinity purification
Recommend Usage	ELISA (1:64000) Western Blot (0.1-0.3 ug/mL) The optimal working dilution should be determined by the end user.
Storage Buffer	In 0.5 mg/mL Tris saline, pH 7.3 (0.02% sodium azide, 0.5% BSA)

Storage Instruction

Store at -20°C.
Aliquot to avoid repeated freezing and thawing.

Note

This product contains sodium azide: a POISONOUS AND HAZARDOUS SUBSTANCE which should be handled by trained staff only.

Applications

- Western Blot (Tissue lysate)

KLF13 polyclonal antibody (Cat # PAB24573) (0.1 ug/mL) staining of human heart lysate (35 ug protein in RIPA buffer). Primary incubation was 1 hour. Detected by chemiluminescence.

- Enzyme-linked Immunoabsorbent Assay

Gene Info — KLF13

Entrez GeneID[51621](#)**Protein Accession#**[NP_057079.2](#)**Gene Name**

KLF13

Gene Alias

BTEB3, FKLF2, NSLP1, RFLAT-1, RFLAT1

Gene Description

Kruppel-like factor 13

Omim ID[605328](#)**Gene Ontology**[Hyperlink](#)**Gene Summary**

KLF13 belongs to a family of transcription factors that contain 3 classical zinc finger DNA-binding domains consisting of a zinc atom tetrahedrally coordinated by 2 cysteines and 2 histidines (C2H2 motif). These transcription factors bind to GC-rich sequences and related GT and CACCC boxes (Schoy et al., 2000 [PubMed 11087666]).[supplied by OMIM]

Other Designations

RANTES factor of late activated T lymphocytes-1|Sp1 like zinc finger transcription factor|basic transcription element binding protein 3|transcription factor NSLP1

Disease

- [Diabetes Mellitus](#)

- [Genetic Predisposition to Disease](#)