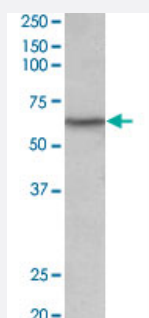


LCK polyclonal antibody

Catalog # PAB24570

Size 100 ug

Applications



Western Blot (Tissue lysate)

LCK polyclonal antibody (Cat # PAB24570) (0.1 ug/mL) staining of human thymus lysate (35 ug protein in RIPA buffer). Primary incubation was 1 hour. Detected by chemiluminescence.

Specification

Product Description	Goat polyclonal antibody raised against synthetic peptide of LCK.
Immunogen	A synthetic peptide corresponding to amino acids 39-52 near N-terminus of human LCK.
Sequence	C-RNGSEVRDPLVTYE
Host	Goat
Theoretical MW (kDa)	60
Reactivity	Human
Specificity	This antibody is not expected to cross-react with other tyrosine protein kinases. Reported variants represent identical protein: NP_005347.3, NP_001036236.1
Form	Liquid
Purification	Antigen affinity purification
Recommend Usage	ELISA (1:16000) Western Blot (0.1-0.3 ug/mL) The optimal working dilution should be determined by the end user.

Storage Buffer	In 0.5 mg/mL Tris saline, pH 7.3 (0.02% sodium azide, 0.5% BSA)
Storage Instruction	Store at -20°C. Aliquot to avoid repeated freezing and thawing.
Note	This product contains sodium azide: a POISONOUS AND HAZARDOUS SUBSTANCE which should be handled by trained staff only.

Applications

- Western Blot (Tissue lysate)

LCK polyclonal antibody (Cat # PAB24570) (0.1 ug/mL) staining of human thymus lysate (35 ug protein in RIPA buffer). Primary incubation was 1 hour. Detected by chemiluminescence.

- Enzyme-linked Immunoabsorbent Assay

Gene Info — LCK

Entrez GeneID	3932
Protein Accession#	NP_005347.3
Gene Name	LCK
Gene Alias	YT16, p56lck, pp58lck
Gene Description	lymphocyte-specific protein tyrosine kinase
Omim ID	153390
Gene Ontology	Hyperlink

Gene Summary	This gene is a member of the Src family of protein tyrosine kinases (PTKs). The encoded protein is a key signaling molecule in the selection and maturation of developing T-cells. It contains N-terminal sites for myristylation and palmitoylation, a PTK domain, and SH2 and SH3 domains which are involved in mediating protein-protein interactions with phosphotyrosine-containing and proline-rich motifs, respectively. The protein localizes to the plasma membrane and pericentrosomal vesicles, and binds to cell surface receptors, including CD4 and CD8, and other signaling molecules. Multiple alternatively spliced variants, encoding the same protein, have been described. [provided by RefSeq]
--------------	---

Other Designations	T-lymphocyte specific protein tyrosine kinase p56lck p56(LSTRA) protein-tyrosine kinase protein tyrosine kinase proto-oncogene tyrosine-protein kinase LCK
--------------------	--

Pathway

- [Natural killer cell mediated cytotoxicity](#)
- [Primary immunodeficiency](#)
- [T cell receptor signaling pathway](#)

Disease

- [HIV Infections](#)
- [Tobacco Use Disorder](#)