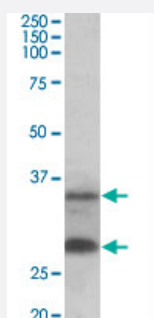


# C16orf57 polyclonal antibody

Catalog # PAB24559      Size 100 ug

## Applications



### Western Blot (Tissue lysate)

C16orf57 polyclonal antibody (Cat # PAB24559) (0.3 ug/mL) staining of human skin lysate (35 ug protein in RIPA buffer). Primary incubation was 1 hour. Detected by chemiluminescence.

## Specification

<b>Product Description</b>	Goat polyclonal antibody raised against synthetic peptide of C16orf57.
<b>Immunogen</b>	A synthetic peptide corresponding to amino acids 154-167 at internal region of human C16orf57.
<b>Sequence</b>	C-TANQVKIYTNQEK
<b>Host</b>	Goat
<b>Theoretical MW (kDa)</b>	35, 28
<b>Reactivity</b>	Human, Mouse, Rat
<b>Specificity</b>	This antibody is expected to recognize both reported isoforms (NP_078874.2; NP_001182231.1).
<b>Form</b>	Liquid
<b>Purification</b>	Antigen affinity purification
<b>Recommend Usage</b>	ELISA (1:16000) Western Blot (0.3-1 ug/mL) The optimal working dilution should be determined by the end user.
<b>Storage Buffer</b>	In 0.5 mg/mL Tris saline, pH 7.3 (0.02% sodium azide, 0.5% BSA)

**Storage Instruction**

Store at -20°C.  
Aliquot to avoid repeated freezing and thawing.

**Note**

This product contains sodium azide: a POISONOUS AND HAZARDOUS SUBSTANCE which should be handled by trained staff only.

## Applications

- Western Blot (Tissue lysate)

C16orf57 polyclonal antibody (Cat # PAB24559) (0.3 ug/mL) staining of human skin lysate (35 ug protein in RIPA buffer). Primary incubation was 1 hour. Detected by chemiluminescence.

- Enzyme-linked Immunoabsorbent Assay

## Gene Info — C16orf57

**Entrez GeneID**[79650](#)**Protein Accession#**[NP\\_078874.2;NP\\_001182231.1](#)**Gene Name**

C16orf57

**Gene Alias**

FLJ13154, HVSL1

**Gene Description**

chromosome 16 open reading frame 57

**Gene Ontology**[Hyperlink](#)**Other Designations**

HVSL motif containing 1|hypothetical protein LOC79650