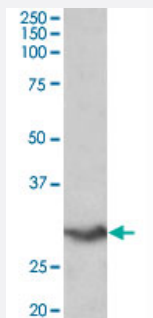


VTCN1 polyclonal antibody

Catalog # PAB24558 Size 100 ug

Applications



Western Blot (Tissue lysate)

VTCN1 polyclonal antibody (Cat # PAB24558) (0.2 ug/mL) staining of human spleen lysate (35 ug protein in RIPA buffer). Primary incubation was 1 hour. Detected by chemiluminescence.

Specification

Product Description	Goat polyclonal antibody raised against synthetic peptide of VTCN1.
Immunogen	A synthetic peptide corresponding to amino acids 153-165 at internal region of human VTCN1.
Sequence	C-PEVNVDYNASSET
Host	Goat
Theoretical MW (kDa)	28
Reactivity	Human
Form	Liquid
Purification	Antigen affinity purification
Recommend Usage	ELISA (1:16000) Western Blot (0.1-0.3 ug/mL) The optimal working dilution should be determined by the end user.
Storage Buffer	In 0.5 mg/mL Tris saline, pH 7.3 (0.02% sodium azide, 0.5% BSA)

Storage Instruction

Store at -20°C.
Aliquot to avoid repeated freezing and thawing.

Note

This product contains sodium azide: a POISONOUS AND HAZARDOUS SUBSTANCE which should be handled by trained staff only.

Applications

- Western Blot (Tissue lysate)

VTCN1 polyclonal antibody (Cat # PAB24558) (0.2 ug/mL) staining of human spleen lysate (35 ug protein in RIPA buffer). Primary incubation was 1 hour. Detected by chemiluminescence.

- Enzyme-linked Immunoabsorbent Assay

Gene Info — VTCN1

Entrez GeneID[79679](#)**Protein Accession#**[NP_078902.2](#)**Gene Name**

VTCN1

Gene Alias

B7-H4, B7H4, B7S1, B7X, B7h.5, FLJ22418, PRO1291, RP11-229A19.4, VCTN1

Gene Description

V-set domain containing T cell activation inhibitor 1

Omim ID[608162](#)**Gene Ontology**[Hyperlink](#)**Gene Summary**

B7H4 belongs to the B7 family (see CD80; MIM 112203) of costimulatory proteins. These proteins are expressed on the surface of antigen-presenting cells and interact with ligands (e.g., CD28; MIM 186760) on T lymphocytes.[supplied by OMIM]

Other Designations

OTTHUMP00000013947|T cell costimulatory molecule B7x|immune costimulatory protein B7-H4

Disease

- [Arthritis](#)
- [Breast Neoplasms](#)
- [Genetic Predisposition to Disease](#)