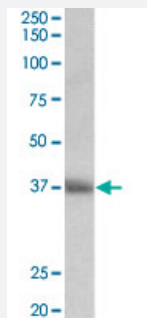


CD7 polyclonal antibody

Catalog # PAB24556 Size 100 ug

Applications



Western Blot (Tissue lysate)

CD7 polyclonal antibody (Cat # PAB24556) (0.5 ug/mL) staining of human thymus lysate (35 ug protein in RIPA buffer). Primary incubation was 1 hour. Detected by chemiluminescence.

Specification

Product Description	Goat polyclonal antibody raised against synthetic peptide of CD7.
Immunogen	A synthetic peptide corresponding to amino acids 132-146 at internal region of human CD7.
Sequence	TEEQSQGWHRCSDAP
Host	Goat
Theoretical MW (kDa)	37
Reactivity	Human
Specificity	The immunizing peptide corresponds to a part of the extracellular domain.
Form	Liquid
Purification	Antigen affinity purification
Recommend Usage	ELISA (1:32000) Western Blot (0.5-2 ug/mL) The optimal working dilution should be determined by the end user.
Storage Buffer	In 0.5 mg/mL Tris saline, pH 7.3 (0.02% sodium azide, 0.5% BSA)

Storage Instruction

Store at -20°C.
Aliquot to avoid repeated freezing and thawing.

Note

This product contains sodium azide: a POISONOUS AND HAZARDOUS SUBSTANCE which should be handled by trained staff only.

Applications

- Western Blot (Tissue lysate)

CD7 polyclonal antibody (Cat # PAB24556) (0.5 ug/mL) staining of human thymus lysate (35 ug protein in RIPA buffer). Primary incubation was 1 hour. Detected by chemiluminescence.

- Enzyme-linked Immunoabsorbent Assay

Gene Info — CD7

Entrez GeneID[924](#)**Protein Accession#**[NP_006128.1](#)**Gene Name**

CD7

Gene Alias

GP40, LEU-9, TP41, Tp40

Gene Description

CD7 molecule

Omim ID[186820](#)**Gene Ontology**[Hyperlink](#)**Gene Summary**

This gene encodes a transmembrane protein which is a member of the immunoglobulin superfamily. This protein is found on thymocytes and mature T cells. It plays an essential role in T-cell interactions and also in T-cell/B-cell interaction during early lymphoid development. [provided by RefSeq]

Other Designations

CD7 antigen|CD7 antigen (p41)|T-cell antigen CD7|T-cell leukemia antigen|p41 protein

Pathway

- [Hematopoietic cell lineage](#)