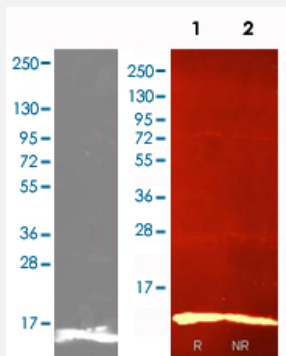


LYZ polyclonal antibody

Catalog # PAB24550 Size 100 ug

Applications



Western Blot (Recombinant protein)

LYZ polyclonal antibody (Cat # PAB24550) was used to detect purified Lysozyme under reduced (left) and reduced (Lane 1) and non-reduced (Lane 2) conditions (right).

Blot shown on right shows detection of 0.5 ug reduced and nonreduced Lysozyme using LYZ polyclonal antibody (Cat # PAB24550) (1:1000) with Dylight 549 conjugated secondary antibody (1:1000 1.5 hr RT).

Specification

Product Description	Rabbit polyclonal antibody raised against full length native LYZ.
Immunogen	Native protein purified from hen egg white.
Host	Rabbit
Reactivity	Chicken
Specificity	A BLAST analysis was used to suggest that this antibody would react with all forms of lysozyme from chicken, including precursor as well as A and B chains. Chains designated as M, L, F, C, Y and D also show 100% sequence homology. Lysozyme from quail and pheasant are also reported to be 100% identical with HEW lysozyme. Cross reactivity against lysozyme from other sources may occur but has not been specifically determined.
Form	Liquid
Purification	Salt fractionation and ion exchange chromatography

Recommend Usage	ELISA (1:25000) Western Blot (1:500-1:2000) Immunohistochemistry (1:500-1:2000) Immunoprecipitation (1:100) The optimal working dilution should be determined by the end user.
Storage Buffer	In 20 mM KH ₂ PO ₄ , 150 mM NaCl, pH 7.2 (0.01% sodium azide)
Storage Instruction	Store at 4°C. For long term storage store at -20°C. Aliquot to avoid repeated freezing and thawing.
Note	This product contains sodium azide: a POISONOUS AND HAZARDOUS SUBSTANCE which should be handled by trained staff only.

Applications

- Western Blot (Recombinant protein)

LYZ polyclonal antibody (Cat # PAB24550) was used to detect purified Lysozyme under reduced (left) and reduced (Lane 1) and non-reduced (Lane 2) conditions (right).

Blot shown on right shows detection of 0.5 ug reduced and nonreduced Lysozyme using LYZ polyclonal antibody (Cat # PAB24550) (1:1000) with Dylight 549 conjugated secondary antibody (1:1000 1.5 hr RT).

- Immunohistochemistry

- Enzyme-linked Immunoabsorbent Assay

Gene Info — LYZ

Entrez GeneID	396218
Protein Accession#	NP_001001470.1
Gene Name	LYZ
Gene Alias	LYZC
Gene Description	lysozyme (renal amyloidosis)
Gene Ontology	Hyperlink
Other Designations	dystrophin egg white lysozyme lysozyme lysozyme C