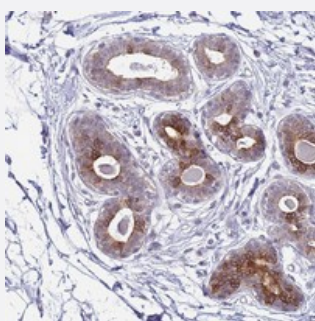


SLC15A3 polyclonal antibody

Catalog # PAB24545 Size 100 uL

Applications



Immunohistochemistry (Formalin/PFA-fixed paraffin-embedded sections)

Immunohistochemical staining of human breast with SLC15A3 polyclonal antibody (Cat # PAB24545) shows moderate cytoplasmic and membranous positivity in glandular cells at 1:20-1:50 dilution.

Specification

Product Description	Rabbit polyclonal antibody raised against recombinant SLC15A3.
Immunogen	Recombinant protein corresponding to amino acids of human SLC15A3.
Sequence	PMGSQVSSMLKLALQNCCPQLWQRHSARDRQCARVLADERSPPQPGASPQEDIANFQ
Host	Rabbit
Reactivity	Human
Form	Liquid
Purification	Antigen affinity purification
Isotype	IgG
Recommend Usage	Immunohistochemistry (1:20-1:50) The optimal working dilution should be determined by the end user.
Storage Buffer	In PBS, pH 7.2 (40% glycerol, 0.02% sodium azide)
Storage Instruction	Store at 4°C. For long term storage store at -20°C. Aliquot to avoid repeated freezing and thawing.

Note

This product contains sodium azide: a POISONOUS AND HAZARDOUS SUBSTANCE which should be handled by trained staff only.

Applications

- Immunohistochemistry (Formalin/PFA-fixed paraffin-embedded sections)

Immunohistochemical staining of human breast with SLC15A3 polyclonal antibody (Cat # PAB24545) shows moderate cytoplasmic and membranous positivity in glandular cells at 1:20-1:50 dilution.

Gene Info — SLC15A3

Entrez GeneID [51296](#)

Protein Accession# [Q8IY34](#)

Gene Name SLC15A3

Gene Alias FLJ26631, OCTP, PHT2, PTR3, hPTR3

Gene Description solute carrier family 15, member 3

Omim ID [610408](#)

Gene Ontology [Hyperlink](#)

Gene Summary O

Other Designations osteoclast transporter hOCTP|peptide transporter 3