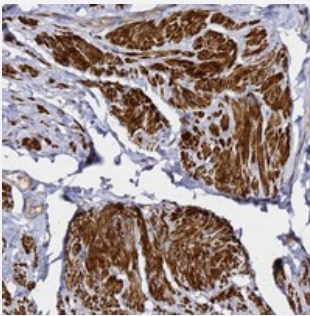


ZFP36L2 polyclonal antibody

Catalog # PAB24537 Size 100 uL

Applications



Immunohistochemistry (Formalin/PFA-fixed paraffin-embedded sections)

Immunohistochemical staining of human smooth muscle with ZFP36L2 polyclonal antibody (Cat # PAB24537) shows strong cytoplasmic positivity in smooth muscle cells at 1:50-1:200 dilution.

Specification

Product Description	Rabbit polyclonal antibody raised against recombinant ZFP36L2.
Immunogen	Recombinant protein corresponding to amino acids of human ZFP36L2.
Sequence	MSTLLSAFYDVDFLCKTEKSLANLNLNMLDKKAVGTPVAAAPSSGFAPGFLRRHSASNLHALA HPAPSPGSCSPKF
Host	Rabbit
Reactivity	Human
Form	Liquid
Purification	Antigen affinity purification
Isotype	IgG
Recommend Usage	Immunohistochemistry (1:50-1:200) The optimal working dilution should be determined by the end user.
Storage Buffer	In PBS, pH 7.2 (40% glycerol, 0.02% sodium azide)

Storage Instruction

Store at 4°C. For long term storage store at -20°C.
Aliquot to avoid repeated freezing and thawing.

Note

This product contains sodium azide: a POISONOUS AND HAZARDOUS SUBSTANCE which should be handled by trained staff only.

Applications

- Immunohistochemistry (Formalin/PFA-fixed paraffin-embedded sections)

Immunohistochemical staining of human smooth muscle with ZFP36L2 polyclonal antibody (Cat # PAB24537) shows strong cytoplasmic positivity in smooth muscle cells at 1:50-1:200 dilution.

Gene Info — ZFP36L2

Entrez GeneID[678](#)**Protein Accession#**[P47974](#)**Gene Name**

ZFP36L2

Gene Alias

BRF2, ERF-2, ERF2, RNF162C, TIS11D

Gene Description

zinc finger protein 36, C3H type-like 2

Gene Ontology[Hyperlink](#)**Gene Summary**

This gene is a member of the TIS11 family of early response genes. Family members are induced by various agonists such as the phorbol ester TPA and the polypeptide mitogen EGF. The encoded protein contains a distinguishing putative zinc finger domain with a repeating cys-his motif. This putative nuclear transcription factor most likely functions in regulating the response to growth factors. [provided by RefSeq]

Other Designations

EGF-response factor 2|zinc finger protein 36, C3H type-like 1|zinc finger protein, C3H type, 36-like 2