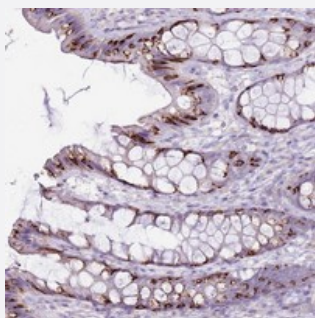


SLC38A5 polyclonal antibody

Catalog # PAB24534 Size 100 uL

Applications



Immunohistochemistry (Formalin/PFA-fixed paraffin-embedded sections)

Immunohistochemical staining of human colon with SLC38A5 polyclonal antibody (Cat # PAB24534) shows strong cytoplasmic positivity in goblet cells.

Specification

Product Description	Rabbit polyclonal antibody raised against recombinant SLC38A5.
Immunogen	Recombinant protein corresponding to amino acids of human SLC38A5.
Sequence	MELQDPKMNGALPSDAVGYRQEREGFLPSRGPAPGSKPVQFMDFE
Host	Rabbit
Reactivity	Human
Form	Liquid
Purification	Antigen affinity purification
Isotype	IgG
Recommend Usage	Immunohistochemistry (1:200-1:500) The optimal working dilution should be determined by the end user.
Storage Buffer	In PBS, pH 7.2 (40% glycerol, 0.02% sodium azide)
Storage Instruction	Store at 4°C. For long term storage store at -20°C. Aliquot to avoid repeated freezing and thawing.

Note

This product contains sodium azide: a POISONOUS AND HAZARDOUS SUBSTANCE which should be handled by trained staff only.

Applications

- Immunohistochemistry (Formalin/PFA-fixed paraffin-embedded sections)

Immunohistochemical staining of human colon with SLC38A5 polyclonal antibody (Cat # PAB24534) shows strong cytoplasmic positivity in goblet cells.

Gene Info — SLC38A5

Entrez GeneID [92745](#)

Protein Accession# [Q8WUX1](#)

Gene Name SLC38A5

Gene Alias JM24, SN2, pp7194

Gene Description solute carrier family 38, member 5

Omim ID [300649](#)

Gene Ontology [Hyperlink](#)

Gene Summary System N amino acid transporters, such as SLC38A5, mediate Na(+)-coupled transport of neutral amino acids, in particular glutamine, asparagine, and histidine (Nakanishi et al., 2001 [PubMed 11243884]).[supplied by OMIM]

Other Designations OTTHUMP00000025793