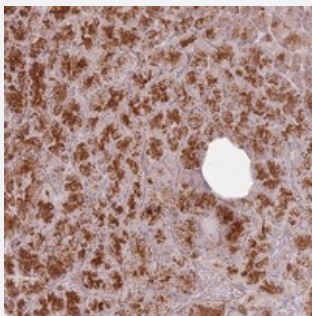


CNPY1 polyclonal antibody

Catalog # PAB24533 Size 100 uL

Applications



Immunohistochemistry (Formalin/PFA-fixed paraffin-embedded sections)

Immunohistochemical staining of human pancreas with CNPY1 polyclonal antibody (Cat # PAB24533) shows strong cytoplasmic and nucleolar positivity in exocrine glandular cells at 1:500-1:1000 dilution.

Specification

Product Description	Rabbit polyclonal antibody raised against recombinant CNPY1.
Immunogen	Recombinant protein corresponding to amino acids of human CNPY1.
Sequence	DPVTKERTFKRFAPRKGDKIYQEFKKLYFYSDAYRPLKFACETIIIEYEDEISSLIAQETHYLADKLC SEKSDLCETSANH
Host	Rabbit
Reactivity	Human
Form	Liquid
Purification	Antigen affinity purification
Isotype	IgG
Recommend Usage	Immunohistochemistry (1:500-1:1000) The optimal working dilution should be determined by the end user.
Storage Buffer	In PBS, pH 7.2 (40% glycerol, 0.02% sodium azide)

Storage Instruction

Store at 4°C. For long term storage store at -20°C.
Aliquot to avoid repeated freezing and thawing.

Note

This product contains sodium azide: a POISONOUS AND HAZARDOUS SUBSTANCE which should be handled by trained staff only.

Applications

- Immunohistochemistry (Formalin/PFA-fixed paraffin-embedded sections)

Immunohistochemical staining of human pancreas with CNPY1 polyclonal antibody (Cat # PAB24533) shows strong cytoplasmic and nucleolar positivity in exocrine glandular cells at 1:500-1:1000 dilution.

Gene Info — CNPY1

Entrez GeneID[285888](#)**Protein Accession#**[Q3B7I2](#)**Gene Name**

CNPY1

Gene Alias

MGC125606

Gene Description

canopy 1 homolog (zebrafish)

Gene Ontology[Hyperlink](#)**Gene Summary**

Cnpy1 is expressed in the midbrain-hindbrain (MHB) boundary in zebrafish, binds FGFR1 (MIM 136350), and plays a role in FGF signaling (Hirate and Okamoto, 2006 [PubMed 16488878]).[supplied by OMIM]

Other Designations

canopy 1 homolog