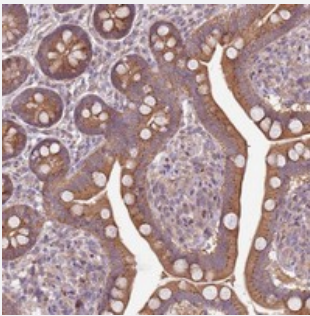


ZFP57 polyclonal antibody

Catalog # PAB24530 Size 100 uL

Applications



Immunohistochemistry (Formalin/PFA-fixed paraffin-embedded sections)

Immunohistochemical staining of human small intestine with ZFP57 polyclonal antibody (Cat # PAB24530) shows moderate cytoplasmic positivity in glandular cells.

Specification

Product Description	Rabbit polyclonal antibody raised against recombinant ZFP57.
Immunogen	Recombinant protein corresponding to amino acids of human ZFP57.
Sequence	PELITKLEQEEEQWREFVHLPNTEGLSEGKKKELREQHPSLRDEGTSDDKVFLACRGAGQCPLS APAGTMDRTRVLQASQAGPPF
Host	Rabbit
Reactivity	Human
Form	Liquid
Purification	Antigen affinity purification
Isotype	IgG
Recommend Usage	Immunohistochemistry (1:200-1:500) The optimal working dilution should be determined by the end user.
Storage Buffer	In PBS, pH 7.2 (40% glycerol, 0.02% sodium azide)

Storage Instruction

Store at 4°C. For long term storage store at -20°C.
Aliquot to avoid repeated freezing and thawing.

Note

This product contains sodium azide: a POISONOUS AND HAZARDOUS SUBSTANCE which should be handled by trained staff only.

Applications

- Immunohistochemistry (Formalin/PFA-fixed paraffin-embedded sections)

Immunohistochemical staining of human small intestine with ZFP57 polyclonal antibody (Cat # PAB24530) shows moderate cytoplasmic positivity in glandular cells.

Gene Info — ZFP57

Entrez GeneID[346171](#)**Protein Accession#**[Q9NU63](#)**Gene Name**

ZFP57

Gene Alias

C6orf40, TNDM1, ZNF698, bA145L22, bA145L22.2

Gene Description

zinc finger protein 57 homolog (mouse)

Gene Ontology[Hyperlink](#)**Gene Summary**

The protein encoded by this gene is a zinc finger protein containing a KRAB domain. Studies in mouse suggest that this protein may function as a transcriptional repressor. Mutations in this gene have been associated with transient neonatal diabetes mellitus type 1 (TNDM1)

Other Designations

OTTHUMP00000065879|zinc finger protein 57 homolog

Disease

- [Genetic Predisposition to Disease](#)
- [Lupus Erythematosus](#)