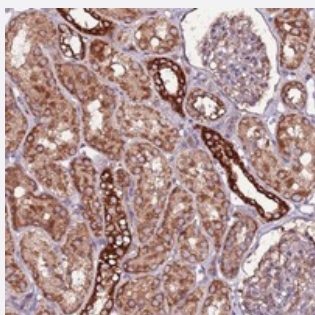


RPS15A polyclonal antibody

Catalog # PAB24528 Size 100 uL

Applications



Immunohistochemistry (Formalin/PFA-fixed paraffin-embedded sections)

Immunohistochemical staining of human kidney with RPS15A polyclonal antibody (Cat # PAB24528) shows strong cytoplasmic positivity in cells in tubules at 1:10-1:20 dilution.

Specification

Product Description	Rabbit polyclonal antibody raised against recombinant RPS15A.
Immunogen	Recombinant protein corresponding to amino acids of human RPS15A.
Sequence	TGRLNKGVISPRFDVQLKDLE
Host	Rabbit
Reactivity	Human
Form	Liquid
Purification	Antigen affinity purification
Isotype	IgG
Recommend Usage	Immunohistochemistry (1:10-1:20) The optimal working dilution should be determined by the end user.
Storage Buffer	In PBS, pH 7.2 (40% glycerol, 0.02% sodium azide)
Storage Instruction	Store at 4°C. For long term storage store at -20°C. Aliquot to avoid repeated freezing and thawing.

Note

This product contains sodium azide: a POISONOUS AND HAZARDOUS SUBSTANCE which should be handled by trained staff only.

Applications

- Immunohistochemistry (Formalin/PFA-fixed paraffin-embedded sections)

Immunohistochemical staining of human kidney with RPS15A polyclonal antibody (Cat # PAB24528) shows strong cytoplasmic positivity in cells in tubules at 1:10-1:20 dilution.

Gene Info — RPS15A

Entrez GeneID [6210](#)

Protein Accession# [P62244](#)

Gene Name RPS15A

Gene Alias FLJ27457, MGC111208, S15a

Gene Description ribosomal protein S15a

Omim ID [603674](#)

Gene Ontology [Hyperlink](#)

Gene Summary Ribosomes, the organelles that catalyze protein synthesis, consist of a small 40S subunit and a large 60S subunit. Together these subunits are composed of 4 RNA species and approximately 80 structurally distinct proteins. This gene encodes a ribosomal protein that is a component of the 40 S subunit. The protein belongs to the S8P family of ribosomal proteins. It is located in the cytoplasm. As is typical for genes encoding ribosomal proteins, there are multiple processed pseudogenes of this gene dispersed through the genome. [provided by RefSeq]

Other Designations 40S ribosomal protein S15a|up-regulated by HBV X protein

Pathway

- [Ribosome](#)