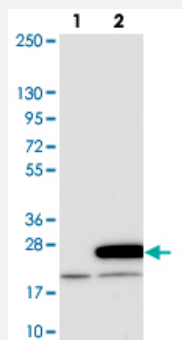


MRPL20 polyclonal antibody

Catalog # PAB24526 Size 100 uL

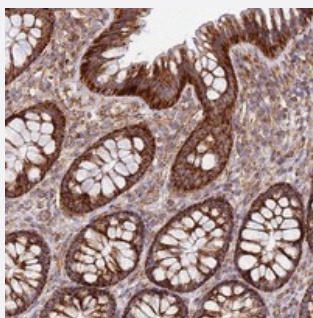
Applications



Western Blot (Transfected lysate)

Western blot analysis of Lane 1: Negative control (vector only transfected HEK293T lysate).

Lane 2: Over-expression lysate (Co-expressed with a C-terminal myc-DDK tag (~3.1 kDa) in mammalian HEK293T cells with MRPL20 polyclonal antibody (Cat # PAB24526).



Immunohistochemistry (Formalin/PFA-fixed paraffin-embedded sections)

Immunohistochemical staining of human colon with MRPL20 polyclonal antibody (Cat # PAB24526) shows strong cytoplasmic positivity in glandular cells at 1:50-1:200 dilution.

Specification

Product Description	Rabbit polyclonal antibody raised against recombinant MRPL20.
Immunogen	Recombinant protein corresponding to amino acids of human MRPL20.
Sequence	ASQEHLKYPALIGNLVKQCVELNRKVLADLAMEPKTFKSLAALASRRRHGFAAALGDGKEPE GFSRVVQYH
Host	Rabbit
Reactivity	Human
Form	Liquid

Purification	Antigen affinity purification
Isotype	IgG
Recommend Usage	Immunohistochemistry (1:50-1:200) The optimal working dilution should be determined by the end user.
Storage Buffer	In PBS, pH 7.2 (40% glycerol, 0.02% sodium azide)
Storage Instruction	Store at 4°C. For long term storage store at -20°C. Aliquot to avoid repeated freezing and thawing.
Note	This product contains sodium azide: a POISONOUS AND HAZARDOUS SUBSTANCE which should be handled by trained staff only.

Applications

- Western Blot (Transfected lysate)

Western blot analysis of Lane 1: Negative control (vector only transfected HEK293T lysate).

Lane 2: Over-expression lysate (Co-expressed with a C-terminal myc-DDK tag (~3.1 kDa) in mammalian HEK293T cells with MRPL20 polyclonal antibody (Cat # PAB24526).

- Immunohistochemistry (Formalin/PFA-fixed paraffin-embedded sections)

Immunohistochemical staining of human colon with MRPL20 polyclonal antibody (Cat # PAB24526) shows strong cytoplasmic positivity in glandular cells at 1:50-1:200 dilution.

Gene Info — MRPL20

Entrez GeneID	55052
Protein Accession#	Q9BYC9
Gene Name	MRPL20
Gene Alias	L20mt, MGC4779, MGC74465, MRP-L20
Gene Description	mitochondrial ribosomal protein L20
Gene Ontology	Hyperlink

Gene Summary

Mammalian mitochondrial ribosomal proteins are encoded by nuclear genes and help in protein synthesis within the mitochondrion. Mitochondrial ribosomes (mitoribosomes) consist of a small 28S subunit and a large 39S subunit. They have an estimated 75% protein to rRNA composition compared to prokaryotic ribosomes, where this ratio is reversed. Another difference between mammalian mitoribosomes and prokaryotic ribosomes is that the latter contain a 5S rRNA. Among different species, the proteins comprising the mitoribosome differ greatly in sequence, and sometimes in biochemical properties, which prevents easy recognition by sequence homology. This gene encodes a 39S subunit protein. A pseudogene corresponding to this gene is found on chromosome 21q. [provided by RefSeq]

Other Designations

39S ribosomal protein L20, mitochondrial|OTTHUMP00000002947