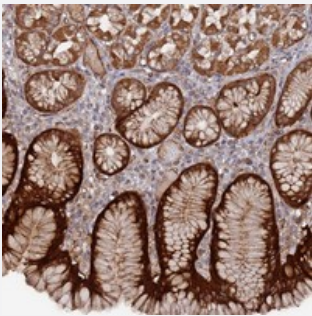


DDX60 polyclonal antibody

Catalog # PAB24522 Size 100 uL

Applications



Immunohistochemistry (Formalin/PFA-fixed paraffin-embedded sections)

Immunohistochemical staining of human stomach with DDX60 polyclonal antibody (Cat # PAB24522) shows strong cytoplasmic positivity in glandular cells.

Specification

Product Description	Rabbit polyclonal antibody raised against recombinant DDX60.
Immunogen	Recombinant protein corresponding to amino acids of human DDX60.
Sequence	PKADKEAHVMANKLRKVKKSIEKQKIIDEKSQKKTRNVDQSLIHEAEHDNLVKCLEKNLEIPQDCT YADQKAVDTETLQKVFGRV
Host	Rabbit
Reactivity	Human
Form	Liquid
Purification	Antigen affinity purification
Isotype	IgG
Recommend Usage	Immunohistochemistry (1:50-1:200) The optimal working dilution should be determined by the end user.
Storage Buffer	In PBS, pH 7.2 (40% glycerol, 0.02% sodium azide)

Storage Instruction

Store at 4°C. For long term storage store at -20°C.
Aliquot to avoid repeated freezing and thawing.

Note

This product contains sodium azide: a POISONOUS AND HAZARDOUS SUBSTANCE which should be handled by trained staff only.

Applications

- Immunohistochemistry (Formalin/PFA-fixed paraffin-embedded sections)

Immunohistochemical staining of human stomach with DDX60 polyclonal antibody (Cat # PAB24522) shows strong cytoplasmic positivity in glandular cells.

Gene Info — DDX60

Entrez GeneID [55601](#)

Protein Accession# [Q8IY21](#)

Gene Name DDX60

Gene Alias FLJ10787, FLJ20035

Gene Description DEAD (Asp-Glu-Ala-Asp) box polypeptide 60

Gene Ontology [Hyperlink](#)

Other Designations -