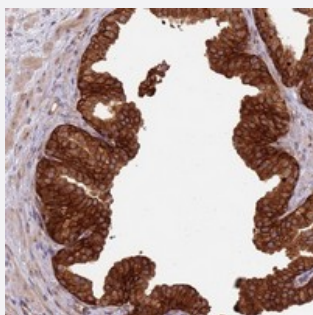


LRRC73 polyclonal antibody

Catalog # PAB24513 Size 100 uL

Applications



Immunohistochemistry (Formalin/PFA-fixed paraffin-embedded sections)

Immunohistochemical staining of human prostate with LRRC73 polyclonal antibody (Cat # PAB24513) shows strong cytoplasmic and membranous positivity in glandular cells at 1:50-1:200 dilution.

Specification

Product Description	Rabbit polyclonal antibody raised against recombinant LRRC73.
Immunogen	Recombinant protein corresponding to amino acids of human LRRC73.
Sequence	MLPSSIQISGEPLSGAEVRDICRGLRDNAVRLLSLRGCRLCDRDFGRICRALAGATSLAQLNLNLG VVSSPSRIKQLAEALRTNRSIQSLFLHGS
Host	Rabbit
Reactivity	Human
Form	Liquid
Purification	Antigen affinity purification
Isotype	IgG
Recommend Usage	Immunohistochemistry (1:50-1:200) The optimal working dilution should be determined by the end user.
Storage Buffer	In PBS, pH 7.2 (40% glycerol, 0.02% sodium azide)

Storage Instruction

Store at 4°C. For long term storage store at -20°C.
Aliquot to avoid repeated freezing and thawing.

Note

This product contains sodium azide: a POISONOUS AND HAZARDOUS SUBSTANCE which should be handled by trained staff only.

Applications

- Immunohistochemistry (Formalin/PFA-fixed paraffin-embedded sections)

Immunohistochemical staining of human prostate with LRRC73 polyclonal antibody (Cat # PAB24513) shows strong cytoplasmic and membranous positivity in glandular cells at 1:50-1:200 dilution.

Gene Info — LRRC73

Entrez GeneID[221424](#)**Protein Accession#**[Q5JTD7](#)**Gene Name**

LRRC73

Gene Alias

RP3-337H4.2, C6orf154, dJ337H4.2

Gene Description

leucine rich repeat containing 73

Gene Ontology[Hyperlink](#)**Other Designations**

leucine-rich repeat-containing protein 73