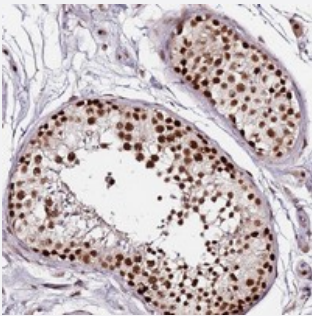


FCF1 polyclonal antibody

Catalog # PAB24509 Size 100 uL

Applications



Immunohistochemistry (Formalin/PFA-fixed paraffin-embedded sections)

Immunohistochemical staining of human testis with FCF1 polyclonal antibody (Cat # PAB24509) shows strong nuclear positivity in cells in seminiferous ducts.

Specification

Product Description	Rabbit polyclonal antibody raised against recombinant FCF1.
Immunogen	Recombinant protein corresponding to amino acids of human FCF1.
Sequence	CITDCVMAEIEKLGQKYRVALRIAKDPRFERLPCTHKGTYADDCLVQRVTQHKCYIVATVDRDLKR RIRKIPGVPIMYISNHRYNIERMPDDYGAP
Host	Rabbit
Reactivity	Human
Form	Liquid
Purification	Antigen affinity purification
Isotype	IgG
Recommend Usage	Immunohistochemistry (1:20-1:50) The optimal working dilution should be determined by the end user.
Storage Buffer	In PBS, pH 7.2 (40% glycerol, 0.02% sodium azide)

Storage Instruction

Store at 4°C. For long term storage store at -20°C.
Aliquot to avoid repeated freezing and thawing.

Note

This product contains sodium azide: a POISONOUS AND HAZARDOUS SUBSTANCE which should be handled by trained staff only.

Applications

- Immunohistochemistry (Formalin/PFA-fixed paraffin-embedded sections)

Immunohistochemical staining of human testis with FCF1 polyclonal antibody (Cat # PAB24509) shows strong nuclear positivity in cells in seminiferous ducts.

Gene Info — FCF1

Entrez GeneID[51077](#)**Protein Accession#**[Q9Y324](#)**Gene Name**

FCF1

Gene Alias

Bka, C14orf111, CGI-35, MGC99629

Gene Description

FCF1 small subunit (SSU) processome component homolog (S. cerevisiae)

Gene Ontology[Hyperlink](#)**Other Designations**

FCF1 small subunit