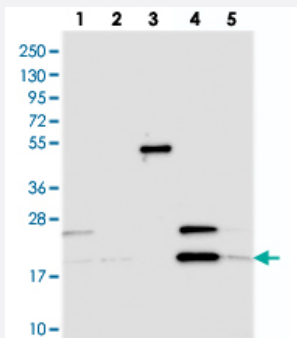


C3orf75 polyclonal antibody

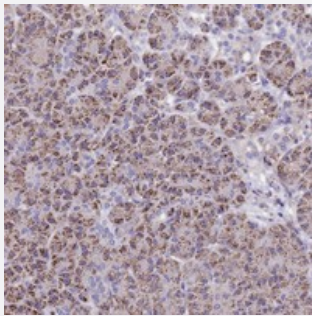
Catalog # PAB24499 Size 100 uL

Applications



Western Blot

Western blot analysis of Lane 1: RT-4, Lane 2: U-251 MG, Lane 3: Human Plasma, Lane 4: Liver, Lane 5: Tonsil with C3orf75 polyclonal antibody (Cat # PAB24499).



Immunohistochemistry (Formalin/PFA-fixed paraffin-embedded sections)

Immunohistochemical staining of human pancreas with C3orf75 polyclonal antibody (Cat # PAB24499) shows distinct granular cytoplasmic positivity in exocrine glandular cells.

Specification

Product Description	Rabbit polyclonal antibody raised against recombinant C3orf75.
Immunogen	Recombinant protein corresponding to amino acids of human C3orf75.
Sequence	VCWELKGNMVLVHDSGDAEDEENDILLNGLSHQSHLILRAEGLATGFCRDVHGQLRILWRRPS QPAVHRDQ
Host	Rabbit
Reactivity	Human
Form	Liquid

Purification	Antigen affinity purification
Isotype	IgG
Recommend Usage	Immunohistochemistry (1:200-1:500) Western Blot (1:250-1:500) The optimal working dilution should be determined by the end user.
Storage Buffer	In PBS, pH 7.2 (40% glycerol, 0.02% sodium azide)
Storage Instruction	Store at 4°C. For long term storage store at -20°C. Aliquot to avoid repeated freezing and thawing.
Note	This product contains sodium azide: a POISONOUS AND HAZARDOUS SUBSTANCE which should be handled by trained staff only.

Applications

- Western Blot

Western blot analysis of Lane 1: RT-4, Lane 2: U-251 MG, Lane 3: Human Plasma, Lane 4: Liver, Lane 5: Tonsil with C3orf75 polyclonal antibody (Cat # PAB24499).

- Immunohistochemistry (Formalin/PFA-fixed paraffin-embedded sections)

Immunohistochemical staining of human pancreas with C3orf75 polyclonal antibody (Cat # PAB24499) shows distinct granular cytoplasmic positivity in exocrine glandular cells.

Gene Info — C3orf75

Entrez GeneID	54859
Protein Accession#	Q0PNE2
Gene Name	C3orf75
Gene Alias	FLJ20211, TMEM103
Gene Description	chromosome 3 open reading frame 75
Gene Ontology	Hyperlink
Other Designations	transmembrane protein 103