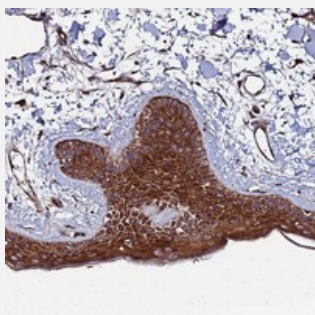


# TMC2 polyclonal antibody

Catalog # PAB24497      Size 100 uL

## Applications



### Immunohistochemistry (Formalin/PFA-fixed paraffin-embedded sections)

Immunohistochemical staining of human skin with TMC2 polyclonal antibody (Cat # PAB24497) shows strong cytoplasmic positivity in keratinocytes at 1:200-1:500 dilution.

## Specification

<b>Product Description</b>	Rabbit polyclonal antibody raised against recombinant TMC2.
<b>Immunogen</b>	Recombinant protein corresponding to amino acids of human TMC2.
<b>Sequence</b>	QVLREVEKSHKSVKGKATARDESDTPKSSSKNATQLQLTKEETPPSASQSQAMDKKAQGPGT SNSASRT
<b>Host</b>	Rabbit
<b>Reactivity</b>	Human
<b>Form</b>	Liquid
<b>Purification</b>	Antigen affinity purification
<b>Isotype</b>	IgG
<b>Recommend Usage</b>	Immunohistochemistry (1:200-1:500) The optimal working dilution should be determined by the end user.
<b>Storage Buffer</b>	In PBS, pH 7.2 (40% glycerol, 0.02% sodium azide)

**Storage Instruction**

Store at 4°C. For long term storage store at -20°C.  
Aliquot to avoid repeated freezing and thawing.

**Note**

This product contains sodium azide: a POISONOUS AND HAZARDOUS SUBSTANCE which should be handled by trained staff only.

## Applications

- Immunohistochemistry (Formalin/PFA-fixed paraffin-embedded sections)

Immunohistochemical staining of human skin with TMC2 polyclonal antibody (Cat # PAB24497) shows strong cytoplasmic positivity in keratinocytes at 1:200-1:500 dilution.

## Gene Info — TMC2

**Entrez GeneID**[117532](#)**Protein Accession#**[Q8TDI7](#)**Gene Name**

TMC2

**Gene Alias**

C20orf145, dJ686C3.3

**Gene Description**

transmembrane channel-like 2

**Omim ID**[606707](#)**Gene Ontology**[Hyperlink](#)**Gene Summary**

This gene is considered a member of a gene family predicted to encode transmembrane proteins. The specific function of this gene is unknown; however, expression in the inner ear suggests that it may be crucial for normal auditory function. Mutations in this gene may underlie hereditary disorders of balance and hearing. [provided by RefSeq]

**Other Designations**

OTTHUMP00000030020|transmembrane cochlear-expressed protein 2|transmembrane, cochlea r expressed, 2