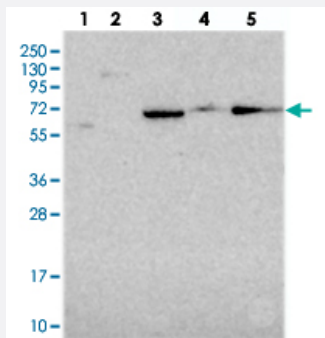


ALDH1A3 polyclonal antibody

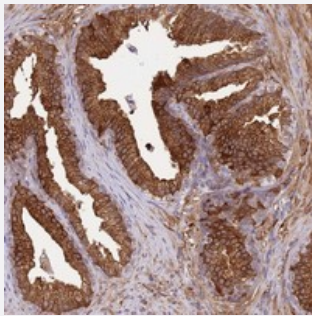
Catalog # PAB24490 Size 100 uL

Applications



Western Blot

Western blot analysis of Lane 1: RT-4, Lane 2: U-251 MG, Lane 3: Human Plasma, Lane 4: Liver, Lane 5: Tonsil with ALDH1A3 polyclonal antibody (Cat # PAB24490) at 1:250-1:500 dilution.



Immunohistochemistry (Formalin/PFA-fixed paraffin-embedded sections)

Immunohistochemical staining of human prostate with ALDH1A3 polyclonal antibody (Cat # PAB24490) shows strong cytoplasmic positivity in glandular cells at 1:20-1:50 dilution.

Specification

Product Description	Rabbit polyclonal antibody raised against recombinant ALDH1A3.
Immunogen	Recombinant protein corresponding to amino acids of human ALDH1A3.
Sequence	ERGGAMATANGAVENGQPDRKPPALPRPIRNLEVKFTKIFIN
Host	Rabbit
Reactivity	Human
Form	Liquid
Purification	Antigen affinity purification

Isotype	IgG
Recommend Usage	Immunohistochemistry (1:20-1:50) Western Blot (1:250-1:500) The optimal working dilution should be determined by the end user.
Storage Buffer	In PBS, pH 7.2 (40% glycerol, 0.02% sodium azide)
Storage Instruction	Store at 4°C. For long term storage store at -20°C. Aliquot to avoid repeated freezing and thawing.
Note	This product contains sodium azide: a POISONOUS AND HAZARDOUS SUBSTANCE which should be handled by trained staff only.

Applications

- Western Blot

Western blot analysis of Lane 1: RT-4, Lane 2: U-251 MG, Lane 3: Human Plasma, Lane 4: Liver, Lane 5: Tonsil with ALDH1A3 polyclonal antibody (Cat # PAB24490) at 1:250-1:500 dilution.

- Immunohistochemistry (Formalin/PFA-fixed paraffin-embedded sections)

Immunohistochemical staining of human prostate with ALDH1A3 polyclonal antibody (Cat # PAB24490) shows strong cytoplasmic positivity in glandular cells at 1:20-1:50 dilution.

Gene Info — ALDH1A3

Entrez GeneID	220
Protein Accession#	P47895
Gene Name	ALDH1A3
Gene Alias	ALDH1A6, ALDH6, RALDH3
Gene Description	aldehyde dehydrogenase 1 family, member A3
Omim ID	600463
Gene Ontology	Hyperlink
Gene Summary	Aldehyde dehydrogenase isozymes are thought to play a major role in the detoxification of aldehydes generated by alcohol metabolism and lipid peroxidation. The enzyme encoded by this gene uses retinal as a substrate, either in a free or cellular retinol-binding protein form. [provided by RefSeq]

Other Designations

acetaldehyde dehydrogenase 6|aldehyde dehydrogenase 1A3|aldehyde dehydrogenase 6|retinal dehyde dehydrogenase 3

Pathway

- [Drug metabolism - cytochrome P450](#)
- [Glycolysis / Gluconeogenesis](#)
- [Histidine metabolism](#)
- [Metabolic pathways](#)
- [Metabolism of xenobiotics by cytochrome P450](#)
- [Phenylalanine metabolism](#)
- [Tyrosine metabolism](#)

Disease

- [Genetic Predisposition to Disease](#)
- [Schizophrenia](#)