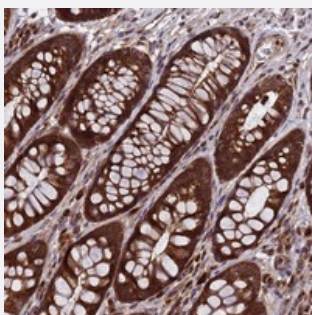


C16orf42 polyclonal antibody

Catalog # PAB24489 Size 100 uL

Applications



Immunohistochemistry (Formalin/PFA-fixed paraffin-embedded sections)

Immunohistochemical staining of human rectum with C16orf42 polyclonal antibody (Cat # PAB24489) shows strong cytoplasmic positivity in glandular cells.

Specification

Product Description	Rabbit polyclonal antibody raised against recombinant C16orf42.
Immunogen	Recombinant protein corresponding to amino acids of human C16orf42.
Sequence	FLANAKESPQEEEIDPFDVDSGREFGNPNRPVASTRLPSDTDDSDASEDP
Host	Rabbit
Reactivity	Human
Form	Liquid
Purification	Antigen affinity purification
Isotype	IgG
Recommend Usage	Immunohistochemistry (1:50-1:200) The optimal working dilution should be determined by the end user.
Storage Buffer	In PBS, pH 7.2 (40% glycerol, 0.02% sodium azide)
Storage Instruction	Store at 4°C. For long term storage store at -20°C. Aliquot to avoid repeated freezing and thawing.

Note

This product contains sodium azide: a POISONOUS AND HAZARDOUS SUBSTANCE which should be handled by trained staff only.

Applications

- Immunohistochemistry (Formalin/PFA-fixed paraffin-embedded sections)

Immunohistochemical staining of human rectum with C16orf42 polyclonal antibody (Cat # PAB24489) shows strong cytoplasmic positivity in glandular cells.

Gene Info — C16orf42

Entrez GeneID	115939
---------------	------------------------

Protein Accession#	Q9UJK0
--------------------	------------------------

Gene Name	C16orf42
-----------	----------

Gene Alias	MGC24381
------------	----------

Gene Description	chromosome 16 open reading frame 42
------------------	-------------------------------------

Gene Ontology	Hyperlink
---------------	---------------------------

Other Designations	hypothetical protein LOC115939
--------------------	--------------------------------